

# Lewiston-Porter Central School District

Aiming Higher



2020-2021 Calendar and Parent Guide



# School District Phone Numbers

## **Superintendent of Schools**

Paul J. Casseri 286-7266

## **Secretary to the Superintendent / District Clerk**

Marisa I. Barile 286-7266

## **Assistant Superintendent of Administrative Services**

Patricia Grupka, Ed.D. 286-7241

## **Assistant Superintendent for Curriculum, Instruction and Technology**

Heather Lyon, Ph.D. 286-7244

## **Director of Special Ed./Grant Writing**

Barbara Godshall, Ed.D. 286-7249/7248

## **Director of Technology and Data**

Nicholas Hill 286-7295

## **Director of Athletics**

Bradly Halgash 286-7865

## **Personnel**

Kathy Moore 286-7242

## **Payroll**

Janet Cirillo 286-7241

## **Pupil Personnel**

286-7265

## **Transportation**

219-1711

## **Facilities and Operations**

Paul Feathers 286-7290

## **Treasurer**

Lynn Braunbach 286-7245

## **Tax Collector**

Debra Coulter 286-7243

## **Cafeteria Manager**

Anna Thomas 286-7288

## **High School**

Principal: Mr. Bradley Rowles

Asst. Principal: John Evert 286-7261

Office 286-7263

Attendance 286-7270/7271

Main Office Fax 286-7852

Guidance 286-7258/7259

Guidance Fax 286-7851

## **Middle School**

Principal: Andrew Auer

Asst. Principal: Alan Ingraham 286-7202

Office 286-7201/7202

Attendance 286-7207

Main Office FAX 286-7204

Guidance 286-7208

## **Intermediate Education Center**

Principal: Tina Rodriguez

Office 286-7252

Attendance 286-7253

Main Office FAX 286-7854

## **Primary Education Center**

Principal: Tamara Larson

Office 286-7220

Attendance 286-7222

Fax 286-7855

## **Office Hours:**

Elementary Schools 7:30 a.m. - 4:30 p.m.

Secondary Schools 7:30 a.m. - 4:30 p.m.

District Offices 7:30 a.m. - 4:30 p.m.

Visit Lewiston-Porter Central School District website [www.lew-port.com](http://www.lew-port.com) for the most up-to-date information.

## ATTENDANCE REQUIREMENTS (Policy 7110)

Children who turn five on or before December 1 are eligible to attend school beginning the preceding September. Kindergarten registration is held in March. Children who turn six on or before December 1 must attend school from the start of classes in September of that school year. Children who turn six years of age after December 1 must attend school the following September. The State Health Department requires that all students entering school must be immunized for Diphtheria and Tetanus (3), Polio (3), Regular Measles, Mumps, and Rubella (2), and Hepatitis B (3). More information about immunizations can be found on the web site and later in this publication.

Children who turn 16 during the school year must remain in school until the end of that school year.

Any absence from school requires a note from the parent or guardian as to the reason for the absence. Excused absences, according to the State Education Department, are: Sickness or death in the family, impassable roads or weather conditions, religious observance, quarantine, required to be in court, attendance at health clinics, approved cooperative work program, approved college visits and military obligations.

Absence or tardiness for any other reason is considered unexcused, and will be entered on the student's record. Each student who has been absent must bring a written excuse from home on the day of his/her return to school.

A written excuse from a parent or guardian is necessary for the dismissal of a student before regular dismissal time. Music lessons or other out-of-school activities should not be scheduled during regular school hours.

If a child is to be picked up by someone other than a parent or guardian, please advise the main office. The parent/guardian or other authorized person must sign the student out at the building office. Appropriate identification may be required.

Classroom teachers cannot release students unless authorized by the principal or his/her designee.

## SCHOOL HOURS

|                              |  |
|------------------------------|--|
| High School                  | Start Time: 7:44 a.m.<br>Dismissal 2:39 p.m.<br>Tardy after 7:50 a.m.          |
| Middle School                | Start time: 7:50 a.m.<br>Dismissal 2:38 p.m.<br>Tardy after 7:56 a.m.          |
| Primary/Intermediate Schools | Start time: 8:45 a.m.<br>Dismissal 3:30 p.m.<br>Tardy after 8:55 a.m.          |
| Early Release Days           | 8:45 a.m. to 2:25 p.m. Elementary<br>7:44 a.m. to 1:14 p.m. Secondary Students |

## PARKING ON CAMPUS

Please use the designated parking areas while on campus. Illegally parked vehicles hinder the access of school buses, fire trucks, ambulances, and other emergency vehicles. Traffic direction and speed restrictions will be enforced; District will enforce more stringent parking rules. There will no longer be parking on district side roads, service roads, fields and green spaces. All parking will be permitted in the designated parking lots. The safety of students, faculty, employees and parents is of the utmost importance.

## STUDENT RECORDS: ACCESS AND CHALLENGE (Policy 7240)

The Board directs that administrative regulations and procedures can be formulated to comply with the provisions of federal law relating to the availability of student records. The purpose of such regulations and procedures shall be to make available to the parents/guardians of students and noncustodial parent(s) whose rights are not limited by court order or formal agreement, or students who are eighteen (18) years of age or older or who are attending an institution of post-secondary education, student records, and files on students, and to ensure the confidentiality of such records with respect to third parties.

The District (Policy 7241) may disclose appropriately designated "directory information" without written consent, unless the parent has advised the District to the contrary in accordance with District procedures. The primary purpose of directory information is to allow the District to include this type of information from a child's education records in certain school publications. Examples include:

- A playbill, showing a student's role in a drama production;
- The annual yearbook;
- Honor roll or other recognition lists;
- Graduation programs; and
- Sports activity sheets, such as for wrestling, showing weight and height of team members.

Directory information, which is information that is generally not considered harmful or an invasion of privacy which can be disclosed without a parent's prior written consent, includes:

- Dates of attendance;
- Grade level;
- Participation in official recognized activities and sports;
- Weight and height of members of athletic teams;
- Degrees, honors, and awards received;
- The most recent educational agency or institution attended.

If a parent does not want the District to disclose directory information from a child's education records without prior written consent, the parent must notify the child's principal in writing.



## **SCHOOL FOOD SERVICE PROGRAM (Policy 5661)**

The Lewiston-Porter Central School District's Food Service Program is contracted through Personal Touch, who will offer nutritious breakfast and lunch for students in grades kindergarten through twelve. Under new federal guidelines, districts are required to offer more nutritious meals, more fruit and vegetables. School meals are subsidized by the state and federal governments to help schools keep the cost per lunch low so most students may participate in the program.

Additional subsidies are available for families who are eligible for the Free and Reduced Lunch Program. A NEW application for Free and Reduced Meals must be turned in by October 1st each school year to be considered for the program.

Prepayment of meals is available at each school by going to: [myschoolbucks.com](http://myschoolbucks.com)

### **Meal Prices**

| <b>Grades</b> | <b><u>Breakfast</u></b> | <b><u>Lunch</u></b> |
|---------------|-------------------------|---------------------|
| K-5           | \$1.75                  | \$2.10              |
| 6-12          | \$1.75                  | \$2.25              |

Cafeteria Manager: Anna Thomas can be reached at 286-7288.

## **LEWISTON-PORTER SCHOOL HEALTH SERVICES - AN OVERVIEW**

All students in the Lewiston-Porter School District, whether in a public or private school, are served by a New York State Registered Nurse. These nurses provide immediate first aid and medical care, administer prescribed medications, do health teaching and maintain individual health records on every child.

**School Physical (Policy 7512):** Any student new to the Lewiston-Porter School District and all students entering Pre-Kindergarten, Kindergarten, and Grades 1, 3, 5, 7, 9 and 11 must present a satisfactory health examination certificate and immunization record upon entrance to school. Generally, a 30 day grace period can be applied for students transferring from outside New York State.

**Dental Certificates:** Dental certificates are also requested for each year that a health examination is required. (New entrants, pre K or K, 1, 3, 5, 7, 9 and 11)

**Screenings:** Students in Kindergarten and Grades 1, 3, 5, 7, 9 and 11 are screened for distance vision acuity. A more complete vision evaluation is done for Pre-Kindergarten or Kindergarten and students new to Lewiston-Porter. Students in Kindergarten and Grades 1, 3, 5, 7, and 11 have hearing testing and girls in Grades 5 and 7, boys in grade 9 are examined for scoliosis per New York State law. Evaluations are also done at parent/guardian request or by teacher referral throughout the school year.

## **IMMUNIZATION REQUIREMENTS (Policy 7511)**

All students entering GRADE 6 or a comparable Special Education/BOCES class who are 11 YEARS OLD or older must get the Tdap shot (tetanus, diphtheria and acellular pertussis). All 10 year olds must receive this shot upon turning 11. The meningitis vaccine is now required for students entering grades 7 and 12.

For your convenience, a complete list of the New York State Immunization Requirements can be found on our Lew-Port website under Health Services.

## **MEDICATION IN SCHOOL (Policy 7513)**

Lewiston-Porter Central School District's Medication Policy discourages the administration of medication in school and encourages the physician to adjust dosage intervals so that medication can be given at home. If that is not possible, statutory regulations require a written order from the student's physician and written permission from the parent to administer medication at school.

Prescription medications (e.g. epi-pens, antibiotics, inhalers, insulin) and over-the-counter medications (e.g. Tylenol, Motrin, Tums, cold meds) all follow the same guidelines. They must be brought to the school by a parent or guardian in the original container, along with a written order from the physician and written permission from the parent. The order must state the student's name, medication, dosage, route and time to be given. Only rescue inhalers or epi-pens may be carried by a student and require special permission from the physician and notification of such to the health office. No other medications may be kept in lockers, purses or book bags. Need more info? Contact your child's school nurse.

Medical forms are available online at [www.lew-port.com](http://www.lew-port.com)

Click on District Services - Health Services

## **ATTENTION ATHLETES (Policy 7420)**

All student athletes must have a current physical on file to even try out for a sport. While most students see their own physician, there are opportunities throughout the year for a student to obtain a health examination at school, free of charge by the school physician. Physicals are good for one year and NYS required physical and athletic physicals are interchangeable.

In collaboration with University of Buffalo Orthopedics, baseline concussion testing for all athletes participating in a contact sport will be conducted by the trainer for the district, Chris Hidalgo. Available dates and times will be posted on the District's website.

All required forms having to do with any health or athletic issue are available online at [www.lew-port.com](http://www.lew-port.com)

Please remember to submit all physical examination certificates and immunization records to the school nurse to be added to the student's permanent record. Do not turn the health paperwork into the coach and be sure to keep a copy!

Feel free to contact the school nurse at any time. They are here for the student and family.

|                               |          |
|-------------------------------|----------|
| Primary Education Center      | 286-7225 |
| Intermediate Education Center | 286-7284 |
| Middle School                 | 286-7205 |
| High School                   | 286-7269 |

## **VISITING OUR SCHOOLS (Policy 3210)**

Visitors are welcome at any time during regular school hours.

Help us to protect students! Only enter the school buildings from the front entrance.

All visitors will be required to report to the Main Office upon arrival at school and state their business. When any visitor, including parents and volunteers, wishes to enter any school building during school hours, he or she may be asked to present a valid state or government issued photo ID, such as a valid driver's license, prior to entry being permitted.

Please sign students in and out if bringing him/her to, or picking him/her up from school. **DO NOT DROP HIM/HER OFF.**

Students can only be released through the main office of his/her building.

Teachers and other school personnel have set work schedules, and are free to meet only during certain times of the day. Please call in advance to schedule an appointment to discuss your child. We welcome the opportunity to meet with you.

## **DISTRICT POLICY ON PHOTOGRAPHS**

Parents who do not wish to have photographs of their children published as part of the District's communication programs are asked to notify the building principal, in writing, at the start of the school year.

Use of Surveillance Cameras in the School District (Policy 5684)

It is the Board's responsibility to ensure the safety of the District's students, staff, facilities, and property. While the Board recognizes the importance of privacy, it has authorized the use of surveillance cameras on District property including in school buildings, school facilities, as well as on school buses, when necessary. These surveillance cameras will help to assist the Board in maintaining the overall safety and welfare of the District's students, staff, property, and visitors, as well as to deter theft, violence, and other criminal activities.

Surveillance cameras will only be placed in public or common areas, or other areas in which individuals do not have a reasonable expectation of privacy.

## **AGE OF ENTRANCE/ENTITLEMENT TO ATTEND AND RESIDENCY (Policies 7120/7130)**

According to Education Law, a student who becomes six (6) years of age on or before the first of December in any school year shall be required to attend full-time instruction from the first day that the District schools are in session in September of such school year, and a student who becomes six (6) years of age after the first of December in any school year shall be required to attend full-time instruction from the first day of session in the following September. Except as otherwise provided in Education Law Section 3205(3), a student shall be required to remain in attendance until the last day of session in the school year in which the student becomes sixteen (16) years of age.

A child's residence is usually determined by the residence of the custodial parent. However, a non-custodial parent who resides in the District may enroll his/her child in a District school if he/she shares the day-to-day responsibilities for the child and the custodial parent designates the child's residence with the non-custodial parent.

## **ACCEPTABLE USE POLICY (Policy 7315)**

The Lewiston-Porter School District has made a wide variety of computers, support equipment and software programs available to students. Additionally, each school is part of a network and has full access to the Internet. Each student and his/her parent/guardian signs an agreement acknowledging and accepting the application of those reasonable rules and responsibilities presented in the "Acceptable Use Policy" and the "Rules and Code of Ethics for Lewiston-Porter Central School Computer Use" document. Students will not be allowed to use district computer equipment and/or the Internet without the appropriate signatures.

### **Computer Use Policy**

- Students will not view, send, or display offensive messages or pictures.
- Students will not share their password with another person.
- Students will not waste or take supplies, such as paper, printer cartridges, and information storage devices, which are provided by the school.
- Students must recognize that the work of all users is valuable; therefore, they will protect the privacy of others' areas by not using their IDs and by not trying to learn their passwords.
- Students will not copy, change, read, or use files in another user's area.
- Students will not attempt to gain unauthorized access to system programs or computer equipment.
- Students will not use computer systems to disturb or harass other computer users or to send unwanted mail.
- Students will not download information onto the hard drives of any school computer.
- Students will not violate the property rights and copyrights in data and computer programs.
- Students will not use the network to send unsolicited, non-educationally related messages which are inoffensive, but which consume system resources.
- Students will not use the network for slanderous, abusive, intimidating, or otherwise offensive messages.

**VIOLATIONS OF THE RULES AND CODE OF ETHICS DESCRIBED ABOVE WILL BE DEALT WITH SERIOUSLY. VIOLATORS WILL LOSE COMPUTER PRIVILEGES.**

### **EMERGENCY CONTACT INFORMATION**

Please be sure that your child's school office has the names, addresses and telephone numbers of the individuals who should be contacted in the event of an emergency.

### **EMERGENCY CLOSINGS (Policies 3510)**

Should early dismissal be necessary, students will be transported to their homes in the same manner in which they are usually taken home at the close of the day.

Parents **WILL NOT** be permitted to enter the school campus to pick up their children.

## **SCHOOL CLOSING INFORMATION**

In the majority of circumstances, the decision to close or delay school is made by 6:15 a.m. and this information is provided to the local television stations (WGRZ - Channel 2, WIVB - Channel 4, WKBW - Channel 7) and by robo-call to parent telephone numbers.

The closing information will also be posted prominently on the homepage of Lew-Port's web site: [www.lew-port.com](http://www.lew-port.com).

There is also a "School Closings" link on the district website's home page which will take you to Channel 4's site for closings throughout the area. Additionally, you may call the District's main telephone number (754-8281) to receive information when school is closed or delayed.

The final decision lies with the parents or guardians. If you believe it is too cold, or the snow is too deep, or the weather is too unsettled, your decision may be to keep your child home. Please note: When schools are closed, all other activities, including sports practices, student activities and community activities held on the school campus are also cancelled.

## **STUDENT ACCIDENT INSURANCE**

The Lewiston-Porter Central School District does not provide student accident insurance. Students involved in an accident while participating in a school sponsored activity and requiring medical, hospital or dental care, must rely on their family coverage.

## **PESTICIDE NOTIFICATION (Policy 5632)**

The Lewiston-Porter Central School District, complying with the Pesticide Neighbor Notification Law, effective July 1, 2001, offers the opportunity to district residents to register for a written 48-hour notification prior to any pesticide application.

The Lew-Port School District practices Integrated Pest Management and only applies small quantities of pesticides/herbicides to control insect manifestations and control weeds on the athletic fields.

Those requesting 48 hour notice will be informed of pending applications at Lew-Port. Information about the product(s) being applied, including any warnings that appear on the label of the pesticide(s) that are pertinent to the protection of humans, animals, or the environment, can be obtained by calling the National Pesticide Telecommunications Network Information Line at 1-800-858-7378 or the New York State Department of Health Center for Environmental Health Information line at 1-800-458-1158.

Individuals on the 48-Hour Registry will receive the following not less than 48 hours prior to a pesticide application:

1. The specific date and location of the application (outdoor applications may include an alternate date due to potential weather conditions)
2. The name of the product, including the EPA pesticide registration number
3. The name and phone number of a school representative to contact for additional information.

If you wish to register for this notification, contact the Buildings and Grounds Department at 286-7290.

## **LEW-PORT IS A NO SMOKING ZONE (Policy 5640)**

It is against the law to smoke or use tobacco on the Lewiston-Porter campus. While on school property, it is unlawful to smoke in a car, in any building, or outdoors, including the stadiums, athletic fields, parking lots and playgrounds.

When visiting the campus, whether for a meeting, community activity, attending an athletic event, or picking up a student in an automobile, your cooperation in obeying this law is appreciated.

## **IT IS A FELONY TO MAKE A BOMB THREAT (Policy 5683)**

On December 1, 1999, a new State law establishing a felony penalty for making a bomb threat against a school took effect (Chapter 561 of the Laws of 1999). These threats are now punishable by up to a three-year prison sentence, a \$5000 fine, and a mandatory one-year driver's license suspension. In addition, the False Reporting Act of 1999 (chapter 207 of the Laws of 1999) took effect which allows the government, schools and emergency services organizations to recover costs incurred when responding to a false report of a bomb. This law holds individuals - or the parents of those under the age of 18 years who make bomb threats - liable for the costs of responding to those threats.

## **DRUG-FREE SCHOOLS POLICY (Policies 6180/7320)**

The consumption, sharing, selling and/or possession of alcoholic beverages, illegal drugs, counterfeit and designer drugs, or paraphernalia for the use of such drugs, shall be prohibited at any school function and on school property at all times. Both students and adults shall abide by this policy at all times.

In December of 1993, the Lewiston-Porter Board of Education officially designated the campus a Drug-Free School Zone.

Under New York State regulations, the penalty may be doubled for the sale of controlled substances to minors, or anyone caught with drugs in their possession within 1,000 feet of the "Drug-Free" zone. The penalty now may be as much as sixteen years in prison.

It is the policy of the Lewiston-Porter Central School District to be primarily concerned with the educational and preventative aspects of alcohol and drug use and/or abuse (the possession, distribution, or use by minors, on or off school property).

It is the goal of this school district to provide secure schools which create a good educational climate for learning and for effective treatment of people in need.

## BUS TRANSPORTATION (Policy 5710)

Morning pick-up of secondary students starts at approximately 7:05 a.m., with arrival time at school at 7:40 a.m.

Morning pick-up of elementary students will start at approximately 7:50 a.m. with arrival time at approximately 8:45 a.m.

Please note: Times may vary due to weather conditions.

The bus contractor is Student Transportation of America. Stopping places for buses in the villages are usually at street corners. In rural areas, and sometimes in villages, buses stop at previous and customary locations. Parents who are not certain where their child should wait for the bus are advised to ask neighbors who have lived there for some time.

Secondary students who miss the morning bus will NOT be allowed to ride an elementary bus which passes through their neighborhood. Each bus load is planned to fill the bus to capacity, and space has not been allotted for extra riders. Students are allowed to ride only the bus to which they are assigned.

Requests for student bus passes should be directed, in writing, to the main office of the student's school.

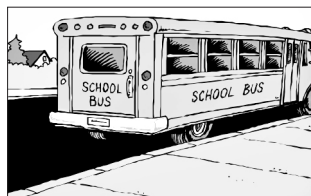
## SUPERVISION OF BUS BEHAVIOR AND SUSPENSION OF BUS PRIVILEGES

The bus driver is the authority on the school bus, and must maintain order at all times. In cases of consistent or flagrant student misbehavior on a bus, the driver may recommend suspension of transportation privileges for the student to school authorities.

According to law, parents are ultimately responsible for their children's safe transport to and from school. Unless there is a legal reason for the absence, children must attend school, whether or not their bus privileges have been suspended by school authorities.

## SCHOOL BUS RULES OF CONDUCT

Rules of conduct for student behavior on school buses have been developed to promote a safe, efficient and pleasant atmosphere as part of the transportation experience to and from school. Parents are asked to review these rules (listed below) with their children.



1. The driver is in charge.
2. Obey the driver's instructions.
3. Be seated and remain seated.
4. Three students per seat.
5. No seats reserved unless assigned.
6. Keep your hands and feet to yourself.
7. Talk in normal tones.
8. No profane language or gestures permitted.
9. Keep hands off property of others.
10. No dangerous weapons permitted.
11. Lighted matches are dangerous weapons.
12. Do not litter or damage the bus.
13. Do not tamper with emergency devices.
14. Do not extend arms or heads from windows.
15. Ride the bus you are assigned.
16. Embark and disembark at your own stop.
17. Keep the aisles clear.
18. Do not eat anything on the bus.

## PROBLEM SOLVING IN THE SCHOOLS (Policy 3230)

Please resolve problems through these channels:

### Instructional Concern

- Step 1: Classroom Teacher
- Step 2: Building Principal or Guidance Counselor
- Step 3: Superintendent

### Medical Concern

- Step 1: School Nurse
- Step 2: Building Principal
- Step 3: Superintendent

### Transportation Concern (Pick-up/Route Problems)

- Step 1: Transportation Office
- Step 2: Assistant Superintendent
- Step 3: Superintendent

### Transportation Concern (Behavior on Bus)

- Step 1: Bus Driver
- Step 2: Building Principal
- Step 3: Assistant Superintendent
- Step 4: Superintendent

### Athletic Concern

- Step 1: Coach
- Step 2: Athletic Director
- Step 3: Building Principal
- Step 4: Superintendent

### Extra-Curricular Activity Concern

- Step 1: Building Principal
- Step 2: Superintendent

## TITLE IX NOTICE OF NONDISCRIMINATION (Policy 3420)

This notice is being published pursuant to the Title IX regulations at 34C.F.R. S 106.9 which require that each recipient publish a statement/notice that it does not discriminate on the basis of sex in the education program or activities it operates. The Lewiston-Porter Central School District does not discriminate on the basis of an individual's actual or perceived race, color, creed, religion, religious practice, national origin, ethnic group, sex (including sexual harassment and sexual violence), gender identity, sexual orientation (the term "sexual orientation" means heterosexuality, homosexuality, bisexuality, or asexuality), political affiliation, age, marital status, military status, veteran status, disability, weight, domestic violence victim status, arrest or conviction record, genetic information or any other basis prohibited by New York state and/or federal non-discrimination laws in its programs and activities and provides equal access to the Boy Scouts and other designated youth groups.

Inquiries regarding the District's non-discrimination policies should be directed to:  
e-mail: [CivilRightsCompliance@lew-port.com](mailto:CivilRightsCompliance@lew-port.com)

Dr. Patricia Grupka  
Civil Rights Compliance Officer  
Lewiston-Porter Central School District  
4061 Creek Road  
Youngstown, NY 14174

Dr. Barbara Godshall  
Title IX and 504 Compliance Officer

## SCHOOL CODE FOR NEW YORK STATE RESIDENT INCOME TAX FORMS

The District's School Code is 341; this code is required when filing New York State income tax forms IT200 and IT201.



## **STUDENTS WITH SPECIAL NEEDS (Policy 7611)**

If your child is having difficulty in school, there are many supports for students within general education, such as counseling, speech and language improvement services, curriculum and instructional modifications and Academic Intervention Services.

As a parent or guardian, if you suspect that your child (beginning at the age of 3) has a disability, your child may be evaluated and determined if eligible for services as defined by the Part 200 of the Commissioner's Regulations, which recommend a free and appropriate education in the least restrictive environment. If you have questions, please contact: Barbara Godshall, Ed.D., Director of Special Education at 716-286-7249.

## **EDUCATION OF STUDENTS IN TEMPORARY HOUSING (Policy 7131)**

Under the Federal McKinney-Vento Homeless Education Assistance Act, the Children and Youth Program ensures educational rights and protection for children and youth experiencing homelessness.

The act was expanded under the "No Child Left Behind Act" of 2001 to include more direct services to homeless children and youth.

Transportation to and from school, access to all school programs, and free breakfast and lunch programs are offered to those in the following situations:

- Living in an emergency or transitional shelter;
- Living in a hotel, motel, trailer park, campground, abandoned in a hospital or awaiting foster care;
- Living in a car, park, public place, bus or train station or abandoned building;
- Doubling up with a relative or friend;
- As a migratory child in any of the above situations.

If your child is homeless or you know of a homeless child, please contact the Lewiston-Porter liaison, Barbara Godshall, at 286-7249.

## **PTSA**

The Lewiston Porter PTSA serves all four schools on campus and supports all students, PreK-12th grade. Strengthening the relationship between school, home and the community is integral to our mission.

The PTSA is run by volunteers and 100% of all fundraising goes directly back to the students. The PTSA works to provide unique and enriching experiences to students of all grade levels.

Anyone is welcome to attend our monthly meetings and become more involved in our schools. Membership is open to parents, grandparents, students and anyone interested in having a positive impact at the Lewiston Porter schools. PTSA officer contact information can be found on the Lewiston Porter webpage. Come join us!

## **COMMUNITY SPORTS AND RECREATION**

A variety of recreation opportunities are available within the Lewiston-Porter community. Please contact the villages or towns directly for more information.

Lewiston Recreation  
Director - Michael Dashineau

Youngstown Recreation  
Director - Kimberly Cudmore

LP Youth Football  
Bradley Martin

## **LEW-PORT CARES FOR ITS FAMILIES WITH THE FAMILY RESOURCE CENTER**

Our mission: To assist students and their families and to promote student success. Family support programs with school-linked services provide parents with the information and support they need to raise emotionally and physically healthy children who arrive at school prepared to learn.

The primary focus is to increase school attendance, improve academic achievement, increase graduation rates, decrease delinquency, promote personal and social development, and encourage emotional and physical health and life-long coping skills.

To request services, contact your child's school counselor, social worker or principal.

## **SCHOOL-FAMILY ENGAGEMENT PLAN FOR TITLE 1 SCHOOLS:**

The Primary Education Center's reading program is funded by Title 1 Part A of the Elementary and Secondary Act. The Plan outlines how parents, school staff and students share responsibility for the improved student academic achievement. For more information regarding the Family Engage Plan, please contact the Special Education Department, 286-7248.

## **COMMUNITY USE OF FACILITIES (Policy 3280)**

Community groups that wish to use any school facility, meeting rooms, cafeterias, stage, pool, gymnasium or outside athletic fields, should submit a completed Building Use Form, available in the District Office Building or on the District's website under the Community tab. Charges for using Lewiston-Porter facilities will be commensurate with actual costs. Admission fees can only be charged if the proceeds are to be expended for an educational or charitable purpose.

## **CALENDAR KEY**

PEC - Primary Education Center

IEC - Intermediate Education Center

MS - Lewiston-Porter Middle School

HS - Lewiston-Porter High School



# AUGUST 2020

Sunday

Monday

Tuesday

Wednesday

Thursday

Friday

Saturday

**JULY**

| S  | M  | T  | W  | T  | F  | S  |
|----|----|----|----|----|----|----|
|    |    |    | 1  | 2  | 3  | 4  |
| 5  | 6  | 7  | 8  | 9  | 10 | 11 |
| 12 | 13 | 14 | 15 | 16 | 17 | 18 |
| 19 | 20 | 21 | 22 | 23 | 24 | 25 |
| 26 | 27 | 28 | 29 | 30 | 31 |    |

**SEPTEMBER**

| S  | M  | T  | W  | T  | F  | S  |
|----|----|----|----|----|----|----|
|    |    | 1  | 2  | 3  | 4  | 5  |
| 6  | 7  | 8  | 9  | 10 | 11 | 12 |
| 13 | 14 | 15 | 16 | 17 | 18 | 19 |
| 20 | 21 | 22 | 23 | 24 | 25 | 26 |
| 27 | 28 | 29 | 30 |    |    |    |



1

2

3

4

5

6

7

8

9

10 Work Session @ 6:00pm  
(CRC - Board Room)

11

12

13

14

15

16

17

18

19  
  
Islamic New Year

20

21

22

23  
  
30

24 Board of Education Meeting @ 6:00pm  
(CRC - Board Room)  
  
31

25

26

27

28

29



# SEPTEMBER 2020

| Sunday | Monday                            | Tuesday                                   | Wednesday | Thursday | Friday                                 | Saturday |
|--------|-----------------------------------|---|-----------|----------|--|----------|
|        |                                   | 1   | 2         | 3        | 4 HS - Deadline for SAT on October 3rd | 5        |
|        |                                   | Staff Development Days - All Staff Report |           |          |  |          |
| 6      | 7<br>Labor Day<br>District Closed | 8   | 9         | 10       | 11                                     | 12       |

| <b>13</b>                                 | <b>14</b> Work Session @ 6:00pm<br>(CRC - Board Room)                  | <b>15</b>                                   | <b>16</b> | <b>17</b>   | <b>18</b> HS - Deadline for ACT<br>on October 24th | <b>19</b>                            |  |  |  |  |  |  |   |   |   |   |   |   |   |  |  |  |  |  |  |   |   |   |   |   |   |   |   |   |    |    |    |    |    |    |    |    |    |    |    |    |    |    |    |    |    |    |    |    |    |    |  |  |  |  |  |   |         |  |  |  |  |  |  |   |   |   |   |   |   |   |  |  |  |  |   |   |   |   |   |   |   |   |   |    |    |    |    |    |    |    |    |    |    |    |    |    |    |    |    |    |    |    |    |    |    |
|---|--|---|-----------|---|--|--------------------------------------|--|--|--|--|--|--|---|---|---|---|---|---|---|--|--|--|--|--|--|---|---|---|---|---|---|---|---|---|----|----|----|----|----|----|----|----|----|----|----|----|----|----|----|----|----|----|----|----|----|----|--|--|--|--|--|---|---------|--|--|--|--|--|--|---|---|---|---|---|---|---|--|--|--|--|---|---|---|---|---|---|---|---|---|----|----|----|----|----|----|----|----|----|----|----|----|----|----|----|----|----|----|----|----|----|----|
| <b>20</b>                                 | <b>21</b>  | <b>22</b><br><br><b>First Day of Autumn</b> | <b>23</b> | <b>24</b>   | <b>25</b><br><br><b>Rosh Hashanah Begins</b>       | <b>26</b> HS - SAT Test<br>@ 7:45 am |  |  |  |  |  |  |   |   |   |   |   |   |   |  |  |  |  |  |  |   |   |   |   |   |   |   |   |   |    |    |    |    |    |    |    |    |    |    |    |    |    |    |    |    |    |    |    |    |    |    |  |  |  |  |  |   |         |  |  |  |  |  |  |   |   |   |   |   |   |   |  |  |  |  |   |   |   |   |   |   |   |   |   |    |    |    |    |    |    |    |    |    |    |    |    |    |    |    |    |    |    |    |    |    |    |
| <b>27</b><br><br><b>Yom Kippur Begins</b> | <b>28</b> Board of Education<br>Meeting @ 6:00pm<br>(CRC - Board Room) | <b>29</b>                                   | <b>30</b> | <table border="1"> <thead> <tr><th colspan="7">AUGUST</th></tr> <tr><th>S</th><th>M</th><th>T</th><th>W</th><th>T</th><th>F</th><th>S</th></tr> </thead> <tbody> <tr><td></td><td></td><td></td><td></td><td></td><td></td><td>1</td></tr> <tr><td>2</td><td>3</td><td>4</td><td>5</td><td>6</td><td>7</td><td>8</td></tr> <tr><td>9</td><td>10</td><td>11</td><td>12</td><td>13</td><td>14</td><td>15</td></tr> <tr><td>16</td><td>17</td><td>18</td><td>19</td><td>20</td><td>21</td><td>22</td></tr> <tr><td>23</td><td>24</td><td>25</td><td>26</td><td>27</td><td>28</td><td>29</td></tr> <tr><td>30</td><td>31</td><td></td><td></td><td></td><td></td><td></td></tr> </tbody> </table> |  | AUGUST                               |  |  |  |  |  |  | S | M | T | W | T | F | S |  |  |  |  |  |  | 1 | 2 | 3 | 4 | 5 | 6 | 7 | 8 | 9 | 10 | 11 | 12 | 13 | 14 | 15 | 16 | 17 | 18 | 19 | 20 | 21 | 22 | 23 | 24 | 25 | 26 | 27 | 28 | 29 | 30 | 31 |  |  |  |  |  | <table border="1"> <thead> <tr><th colspan="7">OCTOBER</th></tr> <tr><th>S</th><th>M</th><th>T</th><th>W</th><th>T</th><th>F</th><th>S</th></tr> </thead> <tbody> <tr><td></td><td></td><td></td><td></td><td>1</td><td>2</td><td>3</td></tr> <tr><td>4</td><td>5</td><td>6</td><td>7</td><td>8</td><td>9</td><td>10</td></tr> <tr><td>11</td><td>12</td><td>13</td><td>14</td><td>15</td><td>16</td><td>17</td></tr> <tr><td>18</td><td>19</td><td>20</td><td>21</td><td>22</td><td>23</td><td>24</td></tr> <tr><td>25</td><td>26</td><td>27</td><td>28</td><td>29</td><td>30</td><td>31</td></tr> </tbody> </table> | OCTOBER |  |  |  |  |  |  | S | M | T | W | T | F | S |  |  |  |  | 1 | 2 | 3 | 4 | 5 | 6 | 7 | 8 | 9 | 10 | 11 | 12 | 13 | 14 | 15 | 16 | 17 | 18 | 19 | 20 | 21 | 22 | 23 | 24 | 25 | 26 | 27 | 28 | 29 | 30 | 31 |
| AUGUST                                    |  |   |           |   |  |                                      |  |  |  |  |  |  |   |   |   |   |   |   |   |  |  |  |  |  |  |   |   |   |   |   |   |   |   |   |    |    |    |    |    |    |    |    |    |    |    |    |    |    |    |    |    |    |    |    |    |    |  |  |  |  |  |   |         |  |  |  |  |  |  |   |   |   |   |   |   |   |  |  |  |  |   |   |   |   |   |   |   |   |   |    |    |    |    |    |    |    |    |    |    |    |    |    |    |    |    |    |    |    |    |    |    |
| S   | M  | T   | W         | T   | F  | S                                    |  |  |  |  |  |  |   |   |   |   |   |   |   |  |  |  |  |  |  |   |   |   |   |   |   |   |   |   |    |    |    |    |    |    |    |    |    |    |    |    |    |    |    |    |    |    |    |    |    |    |  |  |  |  |  |   |         |  |  |  |  |  |  |   |   |   |   |   |   |   |  |  |  |  |   |   |   |   |   |   |   |   |   |    |    |    |    |    |    |    |    |    |    |    |    |    |    |    |    |    |    |    |    |    |    |
|   |  |   |           |   |  | 1                                    |  |  |  |  |  |  |   |   |   |   |   |   |   |  |  |  |  |  |  |   |   |   |   |   |   |   |   |   |    |    |    |    |    |    |    |    |    |    |    |    |    |    |    |    |    |    |    |    |    |    |  |  |  |  |  |   |         |  |  |  |  |  |  |   |   |   |   |   |   |   |  |  |  |  |   |   |   |   |   |   |   |   |   |    |    |    |    |    |    |    |    |    |    |    |    |    |    |    |    |    |    |    |    |    |    |
| 2   | 3  | 4   | 5         | 6   | 7  | 8                                    |  |  |  |  |  |  |   |   |   |   |   |   |   |  |  |  |  |  |  |   |   |   |   |   |   |   |   |   |    |    |    |    |    |    |    |    |    |    |    |    |    |    |    |    |    |    |    |    |    |    |  |  |  |  |  |   |         |  |  |  |  |  |  |   |   |   |   |   |   |   |  |  |  |  |   |   |   |   |   |   |   |   |   |    |    |    |    |    |    |    |    |    |    |    |    |    |    |    |    |    |    |    |    |    |    |
| 9   | 10   | 11  | 12        | 13  | 14   | 15                                   |  |  |  |  |  |  |   |   |   |   |   |   |   |  |  |  |  |  |  |   |   |   |   |   |   |   |   |   |    |    |    |    |    |    |    |    |    |    |    |    |    |    |    |    |    |    |    |    |    |    |  |  |  |  |  |   |         |  |  |  |  |  |  |   |   |   |   |   |   |   |  |  |  |  |   |   |   |   |   |   |   |   |   |    |    |    |    |    |    |    |    |    |    |    |    |    |    |    |    |    |    |    |    |    |    |
| 16  | 17   | 18  | 19        | 20  | 21   | 22                                   |  |  |  |  |  |  |   |   |   |   |   |   |   |  |  |  |  |  |  |   |   |   |   |   |   |   |   |   |    |    |    |    |    |    |    |    |    |    |    |    |    |    |    |    |    |    |    |    |    |    |  |  |  |  |  |   |         |  |  |  |  |  |  |   |   |   |   |   |   |   |  |  |  |  |   |   |   |   |   |   |   |   |   |    |    |    |    |    |    |    |    |    |    |    |    |    |    |    |    |    |    |    |    |    |    |
| 23  | 24   | 25  | 26        | 27  | 28   | 29                                   |  |  |  |  |  |  |   |   |   |   |   |   |   |  |  |  |  |  |  |   |   |   |   |   |   |   |   |   |    |    |    |    |    |    |    |    |    |    |    |    |    |    |    |    |    |    |    |    |    |    |  |  |  |  |  |   |         |  |  |  |  |  |  |   |   |   |   |   |   |   |  |  |  |  |   |   |   |   |   |   |   |   |   |    |    |    |    |    |    |    |    |    |    |    |    |    |    |    |    |    |    |    |    |    |    |
| 30  | 31   |   |           |   |  |                                      |  |  |  |  |  |  |   |   |   |   |   |   |   |  |  |  |  |  |  |   |   |   |   |   |   |   |   |   |    |    |    |    |    |    |    |    |    |    |    |    |    |    |    |    |    |    |    |    |    |    |  |  |  |  |  |   |         |  |  |  |  |  |  |   |   |   |   |   |   |   |  |  |  |  |   |   |   |   |   |   |   |   |   |    |    |    |    |    |    |    |    |    |    |    |    |    |    |    |    |    |    |    |    |    |    |
| OCTOBER                                   |  |   |           |   |  |                                      |  |  |  |  |  |  |   |   |   |   |   |   |   |  |  |  |  |  |  |   |   |   |   |   |   |   |   |   |    |    |    |    |    |    |    |    |    |    |    |    |    |    |    |    |    |    |    |    |    |    |  |  |  |  |  |   |         |  |  |  |  |  |  |   |   |   |   |   |   |   |  |  |  |  |   |   |   |   |   |   |   |   |   |    |    |    |    |    |    |    |    |    |    |    |    |    |    |    |    |    |    |    |    |    |    |
| S   | M  | T   | W         | T   | F  | S                                    |  |  |  |  |  |  |   |   |   |   |   |   |   |  |  |  |  |  |  |   |   |   |   |   |   |   |   |   |    |    |    |    |    |    |    |    |    |    |    |    |    |    |    |    |    |    |    |    |    |    |  |  |  |  |  |   |         |  |  |  |  |  |  |   |   |   |   |   |   |   |  |  |  |  |   |   |   |   |   |   |   |   |   |    |    |    |    |    |    |    |    |    |    |    |    |    |    |    |    |    |    |    |    |    |    |
|   |  |   |           | 1   | 2  | 3                                    |  |  |  |  |  |  |   |   |   |   |   |   |   |  |  |  |  |  |  |   |   |   |   |   |   |   |   |   |    |    |    |    |    |    |    |    |    |    |    |    |    |    |    |    |    |    |    |    |    |    |  |  |  |  |  |   |         |  |  |  |  |  |  |   |   |   |   |   |   |   |  |  |  |  |   |   |   |   |   |   |   |   |   |    |    |    |    |    |    |    |    |    |    |    |    |    |    |    |    |    |    |    |    |    |    |
| 4   | 5  | 6   | 7         | 8   | 9  | 10                                   |  |  |  |  |  |  |   |   |   |   |   |   |   |  |  |  |  |  |  |   |   |   |   |   |   |   |   |   |    |    |    |    |    |    |    |    |    |    |    |    |    |    |    |    |    |    |    |    |    |    |  |  |  |  |  |   |         |  |  |  |  |  |  |   |   |   |   |   |   |   |  |  |  |  |   |   |   |   |   |   |   |   |   |    |    |    |    |    |    |    |    |    |    |    |    |    |    |    |    |    |    |    |    |    |    |
| 11  | 12   | 13  | 14        | 15  | 16   | 17                                   |  |  |  |  |  |  |   |   |   |   |   |   |   |  |  |  |  |  |  |   |   |   |   |   |   |   |   |   |    |    |    |    |    |    |    |    |    |    |    |    |    |    |    |    |    |    |    |    |    |    |  |  |  |  |  |   |         |  |  |  |  |  |  |   |   |   |   |   |   |   |  |  |  |  |   |   |   |   |   |   |   |   |   |    |    |    |    |    |    |    |    |    |    |    |    |    |    |    |    |    |    |    |    |    |    |
| 18  | 19   | 20  | 21        | 22  | 23   | 24                                   |  |  |  |  |  |  |   |   |   |   |   |   |   |  |  |  |  |  |  |   |   |   |   |   |   |   |   |   |    |    |    |    |    |    |    |    |    |    |    |    |    |    |    |    |    |    |    |    |    |    |  |  |  |  |  |   |         |  |  |  |  |  |  |   |   |   |   |   |   |   |  |  |  |  |   |   |   |   |   |   |   |   |   |    |    |    |    |    |    |    |    |    |    |    |    |    |    |    |    |    |    |    |    |    |    |
| 25  | 26   | 27  | 28        | 29  | 30   | 31                                   |  |  |  |  |  |  |   |   |   |   |   |   |   |  |  |  |  |  |  |   |   |   |   |   |   |   |   |   |    |    |    |    |    |    |    |    |    |    |    |    |    |    |    |    |    |    |    |    |    |    |  |  |  |  |  |   |         |  |  |  |  |  |  |   |   |   |   |   |   |   |  |  |  |  |   |   |   |   |   |   |   |   |   |    |    |    |    |    |    |    |    |    |    |    |    |    |    |    |    |    |    |    |    |    |    |

*Welcome Back to School!*

Notes:

---



---



---





# OCTOBER 2020

Sunday

Monday

Tuesday

Wednesday

Thursday

Friday

Saturday

**SEPTEMBER**

| S  | M  | T  | W  | T  | F  | S  |
|----|----|----|----|----|----|----|
|    |    | 1  | 2  | 3  | 4  | 5  |
| 6  | 7  | 8  | 9  | 10 | 11 | 12 |
| 13 | 14 | 15 | 16 | 17 | 18 | 19 |
| 20 | 21 | 22 | 23 | 24 | 25 | 26 |
| 27 | 28 | 29 | 30 |    |    |    |

**NOVEMBER**

| S  | M  | T  | W  | T  | F  | S  |
|----|----|----|----|----|----|----|
| 1  | 2  | 3  | 4  | 5  | 6  | 7  |
| 8  | 9  | 10 | 11 | 12 | 13 | 14 |
| 15 | 16 | 17 | 18 | 19 | 20 | 21 |
| 22 | 23 | 24 | 25 | 26 | 27 | 28 |
| 29 | 30 |    |    |    |    |    |

1

2

3

HS - SAT Test  
@ 7:45 am

Sukkot Begins

4

5

Work Session @ 6:00pm  
(CRC - Board Room)

6

7

HS - Deadline for SAT  
on November 7th

8

9

MS/HS - 5 Week  
Marking Period

10

|    |   |    |                          |    |    |                              |
|----|---|----|--------------------------|----|----|------------------------------|
| 11 | 12<br><b>Indigenous Peoples' Day/Columbus Day District Closed</b> | 13 | 14                       | 15 | 16 | 17                           |
| 18 | 19  | 20 | 21                       | 22 | 23 | 24<br>HS - ACT Test @ 7:45am |
| 25 | 26<br>Board of Education Meeting @ 6:00pm (CRC - Board Room)      | 27 | 28<br>Prophet's Birthday | 29 | 30 | 31                           |

***Fire Safety Month***

Notes:

---



---



---



# NOVEMBER 2020

| Sunday | Monday   | Tuesday           | Wednesday   | Thursday | Friday                                       | Saturday                       |
|--------|--|-------------------|---|----------|--|--------------------------------|
| 1      | 2  | 3<br>Election Day | 4   | 5        | 6  | 7<br>HS - SAT Test<br>@ 7:45am |
| 8      | 9<br>Work Session @ 6:00pm<br>(CRC - Board Room) | 10                | 11<br>Verteran's Day<br>Observance<br>District Closed | 12       | 13<br>MS/HS - End of First<br>Marking Period | 14                             |



| 15      | 16   | 17   | 18                                     | 19 | 20 | 21 |          |    |    |    |    |    |    |          |  |  |  |  |  |  |   |   |   |   |   |   |   |   |   |   |   |   |   |   |  |  |  |  |   |   |   |  |  |   |   |   |   |   |   |   |   |   |   |   |    |   |   |   |   |    |    |    |    |    |    |    |    |    |    |    |    |    |    |    |    |    |    |    |    |    |    |    |    |    |    |    |    |    |    |    |    |    |    |    |    |    |    |    |    |    |    |    |  |  |
|---------|--|--|--|----|----|----|----------|----|----|----|----|----|----|----------|--|--|--|--|--|--|---|---|---|---|---|---|---|---|---|---|---|---|---|---|--|--|--|--|---|---|---|--|--|---|---|---|---|---|---|---|---|---|---|---|----|---|---|---|---|----|----|----|----|----|----|----|----|----|----|----|----|----|----|----|----|----|----|----|----|----|----|----|----|----|----|----|----|----|----|----|----|----|----|----|----|----|----|----|----|----|----|----|--|--|
| 22      | 23<br>Board of Education Meeting @ 6:00pm (CRC - Board Room) | 24   | 25                                     | 26 | 27 | 28 |          |    |    |    |    |    |    |          |  |  |  |  |  |  |   |   |   |   |   |   |   |   |   |   |   |   |   |   |  |  |  |  |   |   |   |  |  |   |   |   |   |   |   |   |   |   |   |   |    |   |   |   |   |    |    |    |    |    |    |    |    |    |    |    |    |    |    |    |    |    |    |    |    |    |    |    |    |    |    |    |    |    |    |    |    |    |    |    |    |    |    |    |    |    |    |    |  |  |
|         |  |  | Thanksgiving Holiday - District Closed |    |    |    |          |    |    |    |    |    |    |          |  |  |  |  |  |  |   |   |   |   |   |   |   |   |   |   |   |   |   |   |  |  |  |  |   |   |   |  |  |   |   |   |   |   |   |   |   |   |   |   |    |   |   |   |   |    |    |    |    |    |    |    |    |    |    |    |    |    |    |    |    |    |    |    |    |    |    |    |    |    |    |    |    |    |    |    |    |    |    |    |    |    |    |    |    |    |    |    |  |  |
|         |  |  | Thanksgiving Day                       |    |    |    |          |    |    |    |    |    |    |          |  |  |  |  |  |  |   |   |   |   |   |   |   |   |   |   |   |   |   |   |  |  |  |  |   |   |   |  |  |   |   |   |   |   |   |   |   |   |   |   |    |   |   |   |   |    |    |    |    |    |    |    |    |    |    |    |    |    |    |    |    |    |    |    |    |    |    |    |    |    |    |    |    |    |    |    |    |    |    |    |    |    |    |    |    |    |    |    |  |  |
| 29      | 30   | <table border="1" style="width: 100%;"> <thead> <tr> <th colspan="7">OCTOBER</th> <th colspan="7">DECEMBER</th> </tr> <tr> <th>S</th><th>M</th><th>T</th><th>W</th><th>T</th><th>F</th><th>S</th> <th>S</th><th>M</th><th>T</th><th>W</th><th>T</th><th>F</th><th>S</th> </tr> </thead> <tbody> <tr> <td></td><td></td><td></td><td></td><td>1</td><td>2</td><td>3</td> <td></td><td></td><td>1</td><td>2</td><td>3</td><td>4</td><td>5</td> </tr> <tr> <td>4</td><td>5</td><td>6</td><td>7</td><td>8</td><td>9</td><td>10</td> <td>6</td><td>7</td><td>8</td><td>9</td><td>10</td><td>11</td><td>12</td> </tr> <tr> <td>11</td><td>12</td><td>13</td><td>14</td><td>15</td><td>16</td><td>17</td> <td>13</td><td>14</td><td>15</td><td>16</td><td>17</td><td>18</td><td>19</td> </tr> <tr> <td>18</td><td>19</td><td>20</td><td>21</td><td>22</td><td>23</td><td>24</td> <td>20</td><td>21</td><td>22</td><td>23</td><td>24</td><td>25</td><td>26</td> </tr> <tr> <td>25</td><td>26</td><td>27</td><td>28</td><td>29</td><td>30</td><td>31</td> <td>27</td><td>28</td><td>29</td><td>30</td><td>31</td><td></td><td></td> </tr> </tbody> </table> |  |    |    |    | OCTOBER  |    |    |    |    |    |    | DECEMBER |  |  |  |  |  |  | S | M | T | W | T | F | S | S | M | T | W | T | F | S |  |  |  |  | 1 | 2 | 3 |  |  | 1 | 2 | 3 | 4 | 5 | 4 | 5 | 6 | 7 | 8 | 9 | 10 | 6 | 7 | 8 | 9 | 10 | 11 | 12 | 11 | 12 | 13 | 14 | 15 | 16 | 17 | 13 | 14 | 15 | 16 | 17 | 18 | 19 | 18 | 19 | 20 | 21 | 22 | 23 | 24 | 20 | 21 | 22 | 23 | 24 | 25 | 26 | 25 | 26 | 27 | 28 | 29 | 30 | 31 | 27 | 28 | 29 | 30 | 31 |  |  |
| OCTOBER |  |  |  |    |    |    | DECEMBER |    |    |    |    |    |    |          |  |  |  |  |  |  |   |   |   |   |   |   |   |   |   |   |   |   |   |   |  |  |  |  |   |   |   |  |  |   |   |   |   |   |   |   |   |   |   |   |    |   |   |   |   |    |    |    |    |    |    |    |    |    |    |    |    |    |    |    |    |    |    |    |    |    |    |    |    |    |    |    |    |    |    |    |    |    |    |    |    |    |    |    |    |    |    |    |  |  |
| S       | M  | T  | W                                      | T  | F  | S  | S        | M  | T  | W  | T  | F  | S  |          |  |  |  |  |  |  |   |   |   |   |   |   |   |   |   |   |   |   |   |   |  |  |  |  |   |   |   |  |  |   |   |   |   |   |   |   |   |   |   |   |    |   |   |   |   |    |    |    |    |    |    |    |    |    |    |    |    |    |    |    |    |    |    |    |    |    |    |    |    |    |    |    |    |    |    |    |    |    |    |    |    |    |    |    |    |    |    |    |  |  |
|         |  |  |  | 1  | 2  | 3  |          |    | 1  | 2  | 3  | 4  | 5  |          |  |  |  |  |  |  |   |   |   |   |   |   |   |   |   |   |   |   |   |   |  |  |  |  |   |   |   |  |  |   |   |   |   |   |   |   |   |   |   |   |    |   |   |   |   |    |    |    |    |    |    |    |    |    |    |    |    |    |    |    |    |    |    |    |    |    |    |    |    |    |    |    |    |    |    |    |    |    |    |    |    |    |    |    |    |    |    |    |  |  |
| 4       | 5  | 6  | 7                                      | 8  | 9  | 10 | 6        | 7  | 8  | 9  | 10 | 11 | 12 |          |  |  |  |  |  |  |   |   |   |   |   |   |   |   |   |   |   |   |   |   |  |  |  |  |   |   |   |  |  |   |   |   |   |   |   |   |   |   |   |   |    |   |   |   |   |    |    |    |    |    |    |    |    |    |    |    |    |    |    |    |    |    |    |    |    |    |    |    |    |    |    |    |    |    |    |    |    |    |    |    |    |    |    |    |    |    |    |    |  |  |
| 11      | 12   | 13   | 14                                     | 15 | 16 | 17 | 13       | 14 | 15 | 16 | 17 | 18 | 19 |          |  |  |  |  |  |  |   |   |   |   |   |   |   |   |   |   |   |   |   |   |  |  |  |  |   |   |   |  |  |   |   |   |   |   |   |   |   |   |   |   |    |   |   |   |   |    |    |    |    |    |    |    |    |    |    |    |    |    |    |    |    |    |    |    |    |    |    |    |    |    |    |    |    |    |    |    |    |    |    |    |    |    |    |    |    |    |    |    |  |  |
| 18      | 19   | 20   | 21                                     | 22 | 23 | 24 | 20       | 21 | 22 | 23 | 24 | 25 | 26 |          |  |  |  |  |  |  |   |   |   |   |   |   |   |   |   |   |   |   |   |   |  |  |  |  |   |   |   |  |  |   |   |   |   |   |   |   |   |   |   |   |    |   |   |   |   |    |    |    |    |    |    |    |    |    |    |    |    |    |    |    |    |    |    |    |    |    |    |    |    |    |    |    |    |    |    |    |    |    |    |    |    |    |    |    |    |    |    |    |  |  |
| 25      | 26   | 27   | 28                                     | 29 | 30 | 31 | 27       | 28 | 29 | 30 | 31 |    |    |          |  |  |  |  |  |  |   |   |   |   |   |   |   |   |   |   |   |   |   |   |  |  |  |  |   |   |   |  |  |   |   |   |   |   |   |   |   |   |   |   |    |   |   |   |   |    |    |    |    |    |    |    |    |    |    |    |    |    |    |    |    |    |    |    |    |    |    |    |    |    |    |    |    |    |    |    |    |    |    |    |    |    |    |    |    |    |    |    |  |  |

*Happy Thanksgiving!*

Notes:

---



---



---



# DECEMBER 2020

Sunday

Monday

Tuesday

Wednesday

Thursday

Friday

Saturday

**NOVEMBER**

| S  | M  | T  | W  | T  | F  | S  |
|----|----|----|----|----|----|----|
| 1  | 2  | 3  | 4  | 5  | 6  | 7  |
| 8  | 9  | 10 | 11 | 12 | 13 | 14 |
| 15 | 16 | 17 | 18 | 19 | 20 | 21 |
| 22 | 23 | 24 | 25 | 26 | 27 | 28 |
| 29 | 30 |    |    |    |    |    |

1

2

3

4

5

6

7

8

9

10

11

12

Hanukkah Begins

| <b>13</b> | <b>14</b> Work Session @ 6:00pm<br>(CRC - Board Room)   | <b>15</b> | <b>16</b> | <b>17</b>  | <b>18</b> MS/HS - 15 Week<br>Marking Period  | <b>19</b>                       |         |  |  |  |  |  |  |   |   |   |   |   |   |   |  |  |  |  |  |   |   |   |   |   |   |   |   |   |    |    |    |    |    |    |    |    |    |    |    |    |    |    |    |    |    |    |    |    |    |    |  |  |  |  |  |  |
|-----------|---|-----------|-----------|--|--|---------------------------------|---------|--|--|--|--|--|--|---|---|---|---|---|---|---|--|--|--|--|--|---|---|---|---|---|---|---|---|---|----|----|----|----|----|----|----|----|----|----|----|----|----|----|----|----|----|----|----|----|----|----|--|--|--|--|--|--|
| <b>20</b> | <b>21</b> Board of Education<br>Meeting @ 6:00pm<br>(CRC - Board Room)<br><br>First Day of Winter | <b>22</b> | <b>23</b> | <b>24</b><br><br>Winter Recess - No Student/Teacher Attendance | <b>25</b><br><br>Christmas Day<br>District Closed  | <b>26</b><br><br>Kwanzaa Begins |         |  |  |  |  |  |  |   |   |   |   |   |   |   |  |  |  |  |  |   |   |   |   |   |   |   |   |   |    |    |    |    |    |    |    |    |    |    |    |    |    |    |    |    |    |    |    |    |    |    |  |  |  |  |  |  |
| <b>27</b> | <b>28</b><br><br>Winter Recess - No Student/Teacher Attendance                                    | <b>29</b> | <b>30</b> | <b>31</b>  | <table border="1"> <thead> <tr> <th colspan="7">JANUARY</th> </tr> <tr> <th>S</th> <th>M</th> <th>T</th> <th>W</th> <th>T</th> <th>F</th> <th>S</th> </tr> </thead> <tbody> <tr> <td></td> <td></td> <td></td> <td></td> <td></td> <td>1</td> <td>2</td> </tr> <tr> <td>3</td> <td>4</td> <td>5</td> <td>6</td> <td>7</td> <td>8</td> <td>9</td> </tr> <tr> <td>10</td> <td>11</td> <td>12</td> <td>13</td> <td>14</td> <td>15</td> <td>16</td> </tr> <tr> <td>17</td> <td>18</td> <td>19</td> <td>20</td> <td>21</td> <td>22</td> <td>23</td> </tr> <tr> <td>24</td> <td>25</td> <td>26</td> <td>27</td> <td>28</td> <td>29</td> <td>30</td> </tr> <tr> <td>31</td> <td></td> <td></td> <td></td> <td></td> <td></td> <td></td> </tr> </tbody> </table> |                                 | JANUARY |  |  |  |  |  |  | S | M | T | W | T | F | S |  |  |  |  |  | 1 | 2 | 3 | 4 | 5 | 6 | 7 | 8 | 9 | 10 | 11 | 12 | 13 | 14 | 15 | 16 | 17 | 18 | 19 | 20 | 21 | 22 | 23 | 24 | 25 | 26 | 27 | 28 | 29 | 30 | 31 |  |  |  |  |  |  |
| JANUARY   |   |           |           |  |  |                                 |         |  |  |  |  |  |  |   |   |   |   |   |   |   |  |  |  |  |  |   |   |   |   |   |   |   |   |   |    |    |    |    |    |    |    |    |    |    |    |    |    |    |    |    |    |    |    |    |    |    |  |  |  |  |  |  |
| S         | M   | T         | W         | T  | F  | S                               |         |  |  |  |  |  |  |   |   |   |   |   |   |   |  |  |  |  |  |   |   |   |   |   |   |   |   |   |    |    |    |    |    |    |    |    |    |    |    |    |    |    |    |    |    |    |    |    |    |    |  |  |  |  |  |  |
|           |   |           |           |  | 1  | 2                               |         |  |  |  |  |  |  |   |   |   |   |   |   |   |  |  |  |  |  |   |   |   |   |   |   |   |   |   |    |    |    |    |    |    |    |    |    |    |    |    |    |    |    |    |    |    |    |    |    |    |  |  |  |  |  |  |
| 3         | 4   | 5         | 6         | 7  | 8  | 9                               |         |  |  |  |  |  |  |   |   |   |   |   |   |   |  |  |  |  |  |   |   |   |   |   |   |   |   |   |    |    |    |    |    |    |    |    |    |    |    |    |    |    |    |    |    |    |    |    |    |    |  |  |  |  |  |  |
| 10        | 11  | 12        | 13        | 14   | 15   | 16                              |         |  |  |  |  |  |  |   |   |   |   |   |   |   |  |  |  |  |  |   |   |   |   |   |   |   |   |   |    |    |    |    |    |    |    |    |    |    |    |    |    |    |    |    |    |    |    |    |    |    |  |  |  |  |  |  |
| 17        | 18  | 19        | 20        | 21   | 22   | 23                              |         |  |  |  |  |  |  |   |   |   |   |   |   |   |  |  |  |  |  |   |   |   |   |   |   |   |   |   |    |    |    |    |    |    |    |    |    |    |    |    |    |    |    |    |    |    |    |    |    |    |  |  |  |  |  |  |
| 24        | 25  | 26        | 27        | 28   | 29   | 30                              |         |  |  |  |  |  |  |   |   |   |   |   |   |   |  |  |  |  |  |   |   |   |   |   |   |   |   |   |    |    |    |    |    |    |    |    |    |    |    |    |    |    |    |    |    |    |    |    |    |    |  |  |  |  |  |  |
| 31        |   |           |           |  |  |                                 |         |  |  |  |  |  |  |   |   |   |   |   |   |   |  |  |  |  |  |   |   |   |   |   |   |   |   |   |    |    |    |    |    |    |    |    |    |    |    |    |    |    |    |    |    |    |    |    |    |    |  |  |  |  |  |  |

*Happy Holidays!*

Notes:

---



---



---





# JANUARY 2021

Sunday

Monday

Tuesday

Wednesday

Thursday

Friday

Saturday

**DECEMBER**

| S  | M  | T  | W  | T  | F  | S  |
|----|----|----|----|----|----|----|
|    |    | 1  | 2  | 3  | 4  | 5  |
| 6  | 7  | 8  | 9  | 10 | 11 | 12 |
| 13 | 14 | 15 | 16 | 17 | 18 | 19 |
| 20 | 21 | 22 | 23 | 24 | 25 | 26 |
| 27 | 28 | 29 | 30 | 31 |    |    |

**FEBRUARY**

| S  | M  | T  | W  | T  | F  | S  |
|----|----|----|----|----|----|----|
|    | 1  | 2  | 3  | 4  | 5  | 6  |
| 7  | 8  | 9  | 10 | 11 | 12 | 13 |
| 14 | 15 | 16 | 17 | 18 | 19 | 20 |
| 21 | 22 | 23 | 24 | 25 | 26 | 27 |
| 28 |    |    |    |    |    |    |

1  
  
Winter Recess  
  
New Year's Day  
District Closed

3

4

5

6

7

8

9

|           |  |           |           |           |   |           |
|-----------|--|-----------|-----------|-----------|---|-----------|
| <b>10</b> | <b>11</b> Work Session @ 6:00pm<br>(CRC - Board Room)                      | <b>12</b> | <b>13</b> | <b>14</b> | <b>15</b>   | <b>16</b> |
| <b>17</b> | <b>18</b><br><br><b>Martin Luther<br/>King Jr. Day<br/>District Closed</b> | <b>19</b> | <b>20</b> | <b>21</b> | <b>22</b>   | <b>23</b> |
| <b>24</b> | <b>25</b> Board of Education<br>Meeting @ 6:00pm<br>(CRC - Board Room)     | <b>26</b> | <b>27</b> | <b>28</b> | <b>29</b> MS/HS - End of Second<br>Marking Period | <b>30</b> |
| <b>31</b> | <b>HS - Regents Week</b>   |           |           |           |   |           |

*Happy New Year!*

Notes:

---



---



---



# FEBRUARY 2021

| Sunday | Monday   | Tuesday | Wednesday | Thursday | Friday                                       | Saturday |
|--------|--|---------|-----------|----------|--|----------|
|        | 1  | 2       | 3         | 4        | 5  | 6        |
| 7      | 8<br>Work Session @ 6:00pm<br>(CRC - Board Room) | 9       | 10        | 11       | 12<br>HS - Deadline for SAT<br>on March 13th | 13       |
|        |  |         |           |          | Chinese New Year                             |          |

| <p><b>14</b></p> <p>Valentine's Day</p>  | <p><b>15</b></p> <p><b>President's Day<br/>District Closed</b></p>  | <p><b>16</b>      Early Release Day<br/>Elementary: 8:45am-2:25pm,<br/>Secondary: 7:44am-1:14pm</p> | <p><b>17</b></p> | <p><b>18</b></p> | <p><b>19</b></p> | <p><b>20</b></p> |  |   |   |   |   |   |   |   |   |   |   |   |   |   |   |   |   |   |   |   |   |    |    |    |    |    |    |    |    |    |    |    |    |    |    |    |    |    |    |    |    |    |    |    |    |    |    |    |    |   |  |  |  |  |  |  |   |   |   |   |   |   |   |   |   |   |   |   |   |   |   |   |   |    |    |    |    |    |    |    |    |    |    |    |    |    |    |    |    |    |    |    |    |    |    |    |    |    |    |    |    |    |  |  |  |
|--|---|---|------------------|------------------|------------------|------------------|--|---|---|---|---|---|---|---|---|---|---|---|---|---|---|---|---|---|---|---|---|----|----|----|----|----|----|----|----|----|----|----|----|----|----|----|----|----|----|----|----|----|----|----|----|----|----|----|----|---|--|--|--|--|--|--|---|---|---|---|---|---|---|---|---|---|---|---|---|---|---|---|---|----|----|----|----|----|----|----|----|----|----|----|----|----|----|----|----|----|----|----|----|----|----|----|----|----|----|----|----|----|--|--|--|
| <p><b>21</b></p>   | <p><b>22</b>      Board of Education<br/>Meeting @ 6:00pm<br/>(CRC - Board Room)</p>  | <p><b>23</b></p>  | <p><b>24</b></p> | <p><b>25</b></p> | <p><b>26</b></p> | <p><b>27</b></p> |  |   |   |   |   |   |   |   |   |   |   |   |   |   |   |   |   |   |   |   |   |    |    |    |    |    |    |    |    |    |    |    |    |    |    |    |    |    |    |    |    |    |    |    |    |    |    |    |    |   |  |  |  |  |  |  |   |   |   |   |   |   |   |   |   |   |   |   |   |   |   |   |   |    |    |    |    |    |    |    |    |    |    |    |    |    |    |    |    |    |    |    |    |    |    |    |    |    |    |    |    |    |  |  |  |
| <p><b>28</b></p>   | <table border="1"> <tr> <td colspan="7"> <p><b>JANUARY</b></p> <table border="1"> <thead> <tr> <th>S</th> <th>M</th> <th>T</th> <th>W</th> <th>T</th> <th>F</th> <th>S</th> </tr> </thead> <tbody> <tr> <td></td> <td></td> <td></td> <td></td> <td></td> <td>1</td> <td>2</td> </tr> <tr> <td>3</td> <td>4</td> <td>5</td> <td>6</td> <td>7</td> <td>8</td> <td>9</td> </tr> <tr> <td>10</td> <td>11</td> <td>12</td> <td>13</td> <td>14</td> <td>15</td> <td>16</td> </tr> <tr> <td>17</td> <td>18</td> <td>19</td> <td>20</td> <td>21</td> <td>22</td> <td>23</td> </tr> <tr> <td>24</td> <td>25</td> <td>26</td> <td>27</td> <td>28</td> <td>29</td> <td>30</td> </tr> <tr> <td>31</td> <td></td> <td></td> <td></td> <td></td> <td></td> <td></td> </tr> </tbody> </table> </td> <td colspan="7"> <p><b>MARCH</b></p> <table border="1"> <thead> <tr> <th>S</th> <th>M</th> <th>T</th> <th>W</th> <th>T</th> <th>F</th> <th>S</th> </tr> </thead> <tbody> <tr> <td></td> <td>1</td> <td>2</td> <td>3</td> <td>4</td> <td>5</td> <td>6</td> </tr> <tr> <td>7</td> <td>8</td> <td>9</td> <td>10</td> <td>11</td> <td>12</td> <td>13</td> </tr> <tr> <td>14</td> <td>15</td> <td>16</td> <td>17</td> <td>18</td> <td>19</td> <td>20</td> </tr> <tr> <td>21</td> <td>22</td> <td>23</td> <td>24</td> <td>25</td> <td>26</td> <td>27</td> </tr> <tr> <td>28</td> <td>29</td> <td>30</td> <td>31</td> <td></td> <td></td> <td></td> </tr> </tbody> </table> </td> </tr> </table> |   |                  |                  |                  |                  | <p><b>JANUARY</b></p> <table border="1"> <thead> <tr> <th>S</th> <th>M</th> <th>T</th> <th>W</th> <th>T</th> <th>F</th> <th>S</th> </tr> </thead> <tbody> <tr> <td></td> <td></td> <td></td> <td></td> <td></td> <td>1</td> <td>2</td> </tr> <tr> <td>3</td> <td>4</td> <td>5</td> <td>6</td> <td>7</td> <td>8</td> <td>9</td> </tr> <tr> <td>10</td> <td>11</td> <td>12</td> <td>13</td> <td>14</td> <td>15</td> <td>16</td> </tr> <tr> <td>17</td> <td>18</td> <td>19</td> <td>20</td> <td>21</td> <td>22</td> <td>23</td> </tr> <tr> <td>24</td> <td>25</td> <td>26</td> <td>27</td> <td>28</td> <td>29</td> <td>30</td> </tr> <tr> <td>31</td> <td></td> <td></td> <td></td> <td></td> <td></td> <td></td> </tr> </tbody> </table> |   |   |   |   |   |   | S | M | T | W | T | F | S |   |   |   |   |   | 1 | 2 | 3  | 4  | 5  | 6  | 7  | 8  | 9  | 10 | 11 | 12 | 13 | 14 | 15 | 16 | 17 | 18 | 19 | 20 | 21 | 22 | 23 | 24 | 25 | 26 | 27 | 28 | 29 | 30 | 31  |  |  |  |  |  |  | <p><b>MARCH</b></p> <table border="1"> <thead> <tr> <th>S</th> <th>M</th> <th>T</th> <th>W</th> <th>T</th> <th>F</th> <th>S</th> </tr> </thead> <tbody> <tr> <td></td> <td>1</td> <td>2</td> <td>3</td> <td>4</td> <td>5</td> <td>6</td> </tr> <tr> <td>7</td> <td>8</td> <td>9</td> <td>10</td> <td>11</td> <td>12</td> <td>13</td> </tr> <tr> <td>14</td> <td>15</td> <td>16</td> <td>17</td> <td>18</td> <td>19</td> <td>20</td> </tr> <tr> <td>21</td> <td>22</td> <td>23</td> <td>24</td> <td>25</td> <td>26</td> <td>27</td> </tr> <tr> <td>28</td> <td>29</td> <td>30</td> <td>31</td> <td></td> <td></td> <td></td> </tr> </tbody> </table> |   |   |   |   |   |   | S | M | T | W | T | F | S |   | 1 | 2 | 3  | 4  | 5  | 6  | 7  | 8  | 9  | 10 | 11 | 12 | 13 | 14 | 15 | 16 | 17 | 18 | 19 | 20 | 21 | 22 | 23 | 24 | 25 | 26 | 27 | 28 | 29 | 30 | 31 |  |  |  |
| <p><b>JANUARY</b></p> <table border="1"> <thead> <tr> <th>S</th> <th>M</th> <th>T</th> <th>W</th> <th>T</th> <th>F</th> <th>S</th> </tr> </thead> <tbody> <tr> <td></td> <td></td> <td></td> <td></td> <td></td> <td>1</td> <td>2</td> </tr> <tr> <td>3</td> <td>4</td> <td>5</td> <td>6</td> <td>7</td> <td>8</td> <td>9</td> </tr> <tr> <td>10</td> <td>11</td> <td>12</td> <td>13</td> <td>14</td> <td>15</td> <td>16</td> </tr> <tr> <td>17</td> <td>18</td> <td>19</td> <td>20</td> <td>21</td> <td>22</td> <td>23</td> </tr> <tr> <td>24</td> <td>25</td> <td>26</td> <td>27</td> <td>28</td> <td>29</td> <td>30</td> </tr> <tr> <td>31</td> <td></td> <td></td> <td></td> <td></td> <td></td> <td></td> </tr> </tbody> </table> |   |   |                  |                  |                  |                  | S  | M | T | W | T | F | S |   |   |   |   |   | 1 | 2 | 3 | 4 | 5 | 6 | 7 | 8 | 9 | 10 | 11 | 12 | 13 | 14 | 15 | 16 | 17 | 18 | 19 | 20 | 21 | 22 | 23 | 24 | 25 | 26 | 27 | 28 | 29 | 30 | 31 |    |    |    |    |    |    | <p><b>MARCH</b></p> <table border="1"> <thead> <tr> <th>S</th> <th>M</th> <th>T</th> <th>W</th> <th>T</th> <th>F</th> <th>S</th> </tr> </thead> <tbody> <tr> <td></td> <td>1</td> <td>2</td> <td>3</td> <td>4</td> <td>5</td> <td>6</td> </tr> <tr> <td>7</td> <td>8</td> <td>9</td> <td>10</td> <td>11</td> <td>12</td> <td>13</td> </tr> <tr> <td>14</td> <td>15</td> <td>16</td> <td>17</td> <td>18</td> <td>19</td> <td>20</td> </tr> <tr> <td>21</td> <td>22</td> <td>23</td> <td>24</td> <td>25</td> <td>26</td> <td>27</td> </tr> <tr> <td>28</td> <td>29</td> <td>30</td> <td>31</td> <td></td> <td></td> <td></td> </tr> </tbody> </table> |  |  |  |  |  |  | S   | M | T | W | T | F | S |   | 1 | 2 | 3 | 4 | 5 | 6 | 7 | 8 | 9 | 10 | 11 | 12 | 13 | 14 | 15 | 16 | 17 | 18 | 19 | 20 | 21 | 22 | 23 | 24 | 25 | 26 | 27 | 28 | 29 | 30 | 31 |    |    |    |    |    |    |    |  |  |  |
| S  | M   | T   | W                | T                | F                | S                |  |   |   |   |   |   |   |   |   |   |   |   |   |   |   |   |   |   |   |   |   |    |    |    |    |    |    |    |    |    |    |    |    |    |    |    |    |    |    |    |    |    |    |    |    |    |    |    |    |   |  |  |  |  |  |  |   |   |   |   |   |   |   |   |   |   |   |   |   |   |   |   |   |    |    |    |    |    |    |    |    |    |    |    |    |    |    |    |    |    |    |    |    |    |    |    |    |    |    |    |    |    |  |  |  |
|  |   |   |                  |                  | 1                | 2                |  |   |   |   |   |   |   |   |   |   |   |   |   |   |   |   |   |   |   |   |   |    |    |    |    |    |    |    |    |    |    |    |    |    |    |    |    |    |    |    |    |    |    |    |    |    |    |    |    |   |  |  |  |  |  |  |   |   |   |   |   |   |   |   |   |   |   |   |   |   |   |   |   |    |    |    |    |    |    |    |    |    |    |    |    |    |    |    |    |    |    |    |    |    |    |    |    |    |    |    |    |    |  |  |  |
| 3  | 4   | 5   | 6                | 7                | 8                | 9                |  |   |   |   |   |   |   |   |   |   |   |   |   |   |   |   |   |   |   |   |   |    |    |    |    |    |    |    |    |    |    |    |    |    |    |    |    |    |    |    |    |    |    |    |    |    |    |    |    |   |  |  |  |  |  |  |   |   |   |   |   |   |   |   |   |   |   |   |   |   |   |   |   |    |    |    |    |    |    |    |    |    |    |    |    |    |    |    |    |    |    |    |    |    |    |    |    |    |    |    |    |    |  |  |  |
| 10   | 11  | 12  | 13               | 14               | 15               | 16               |  |   |   |   |   |   |   |   |   |   |   |   |   |   |   |   |   |   |   |   |   |    |    |    |    |    |    |    |    |    |    |    |    |    |    |    |    |    |    |    |    |    |    |    |    |    |    |    |    |   |  |  |  |  |  |  |   |   |   |   |   |   |   |   |   |   |   |   |   |   |   |   |   |    |    |    |    |    |    |    |    |    |    |    |    |    |    |    |    |    |    |    |    |    |    |    |    |    |    |    |    |    |  |  |  |
| 17   | 18  | 19  | 20               | 21               | 22               | 23               |  |   |   |   |   |   |   |   |   |   |   |   |   |   |   |   |   |   |   |   |   |    |    |    |    |    |    |    |    |    |    |    |    |    |    |    |    |    |    |    |    |    |    |    |    |    |    |    |    |   |  |  |  |  |  |  |   |   |   |   |   |   |   |   |   |   |   |   |   |   |   |   |   |    |    |    |    |    |    |    |    |    |    |    |    |    |    |    |    |    |    |    |    |    |    |    |    |    |    |    |    |    |  |  |  |
| 24   | 25  | 26  | 27               | 28               | 29               | 30               |  |   |   |   |   |   |   |   |   |   |   |   |   |   |   |   |   |   |   |   |   |    |    |    |    |    |    |    |    |    |    |    |    |    |    |    |    |    |    |    |    |    |    |    |    |    |    |    |    |   |  |  |  |  |  |  |   |   |   |   |   |   |   |   |   |   |   |   |   |   |   |   |   |    |    |    |    |    |    |    |    |    |    |    |    |    |    |    |    |    |    |    |    |    |    |    |    |    |    |    |    |    |  |  |  |
| 31   |   |   |                  |                  |                  |                  |  |   |   |   |   |   |   |   |   |   |   |   |   |   |   |   |   |   |   |   |   |    |    |    |    |    |    |    |    |    |    |    |    |    |    |    |    |    |    |    |    |    |    |    |    |    |    |    |    |   |  |  |  |  |  |  |   |   |   |   |   |   |   |   |   |   |   |   |   |   |   |   |   |    |    |    |    |    |    |    |    |    |    |    |    |    |    |    |    |    |    |    |    |    |    |    |    |    |    |    |    |    |  |  |  |
| S  | M   | T   | W                | T                | F                | S                |  |   |   |   |   |   |   |   |   |   |   |   |   |   |   |   |   |   |   |   |   |    |    |    |    |    |    |    |    |    |    |    |    |    |    |    |    |    |    |    |    |    |    |    |    |    |    |    |    |   |  |  |  |  |  |  |   |   |   |   |   |   |   |   |   |   |   |   |   |   |   |   |   |    |    |    |    |    |    |    |    |    |    |    |    |    |    |    |    |    |    |    |    |    |    |    |    |    |    |    |    |    |  |  |  |
|  | 1   | 2   | 3                | 4                | 5                | 6                |  |   |   |   |   |   |   |   |   |   |   |   |   |   |   |   |   |   |   |   |   |    |    |    |    |    |    |    |    |    |    |    |    |    |    |    |    |    |    |    |    |    |    |    |    |    |    |    |    |   |  |  |  |  |  |  |   |   |   |   |   |   |   |   |   |   |   |   |   |   |   |   |   |    |    |    |    |    |    |    |    |    |    |    |    |    |    |    |    |    |    |    |    |    |    |    |    |    |    |    |    |    |  |  |  |
| 7  | 8   | 9   | 10               | 11               | 12               | 13               |  |   |   |   |   |   |   |   |   |   |   |   |   |   |   |   |   |   |   |   |   |    |    |    |    |    |    |    |    |    |    |    |    |    |    |    |    |    |    |    |    |    |    |    |    |    |    |    |    |   |  |  |  |  |  |  |   |   |   |   |   |   |   |   |   |   |   |   |   |   |   |   |   |    |    |    |    |    |    |    |    |    |    |    |    |    |    |    |    |    |    |    |    |    |    |    |    |    |    |    |    |    |  |  |  |
| 14   | 15  | 16  | 17               | 18               | 19               | 20               |  |   |   |   |   |   |   |   |   |   |   |   |   |   |   |   |   |   |   |   |   |    |    |    |    |    |    |    |    |    |    |    |    |    |    |    |    |    |    |    |    |    |    |    |    |    |    |    |    |   |  |  |  |  |  |  |   |   |   |   |   |   |   |   |   |   |   |   |   |   |   |   |   |    |    |    |    |    |    |    |    |    |    |    |    |    |    |    |    |    |    |    |    |    |    |    |    |    |    |    |    |    |  |  |  |
| 21   | 22  | 23  | 24               | 25               | 26               | 27               |  |   |   |   |   |   |   |   |   |   |   |   |   |   |   |   |   |   |   |   |   |    |    |    |    |    |    |    |    |    |    |    |    |    |    |    |    |    |    |    |    |    |    |    |    |    |    |    |    |   |  |  |  |  |  |  |   |   |   |   |   |   |   |   |   |   |   |   |   |   |   |   |   |    |    |    |    |    |    |    |    |    |    |    |    |    |    |    |    |    |    |    |    |    |    |    |    |    |    |    |    |    |  |  |  |
| 28   | 29  | 30  | 31               |                  |                  |                  |  |   |   |   |   |   |   |   |   |   |   |   |   |   |   |   |   |   |   |   |   |    |    |    |    |    |    |    |    |    |    |    |    |    |    |    |    |    |    |    |    |    |    |    |    |    |    |    |    |   |  |  |  |  |  |  |   |   |   |   |   |   |   |   |   |   |   |   |   |   |   |   |   |    |    |    |    |    |    |    |    |    |    |    |    |    |    |    |    |    |    |    |    |    |    |    |    |    |    |    |    |    |  |  |  |

*Happy President's Day!*

Notes:

---



---



---



# MARCH 2021

| Sunday   | Monday  | Tuesday  | Wednesday | Thursday  | Friday                                  | Saturday                         |
|----------|---|----------|-----------|-----------|---|----------------------------------|
|          | <b>1</b>  | <b>2</b> | <b>3</b>  | <b>4</b>  | <b>5</b> MS/HS - 25 Week Marking Period | <b>6</b>                         |
| <b>7</b> | <b>8</b> Work Session @ 6:00pm (CRC - Board Room) | <b>9</b> | <b>10</b> | <b>11</b> | <b>12</b>                               | <b>13</b> HS - SAT Test @ 7:45am |



| <b>14</b><br><br><br><br><br><b>Pi Day</b><br><b>Daylight Savings Time</b>   | <b>15</b>   | <b>16</b> Early Release Day<br>Elementary: 8:45am-2:25pm,<br>Secondary: 7:44am-1:14pm | <b>17</b> | <b>18</b>   | <b>19</b><br><br><br><b>Parent Teacher Conferences</b><br><b>Faculty Data Day</b><br><b>No Student Attendance</b> | <b>20</b><br><br><br><br><br><b>First Day of Spring</b> |  |   |   |   |   |   |   |   |   |   |   |   |   |   |   |   |   |    |    |    |    |    |    |    |    |    |    |    |    |    |    |    |    |    |    |    |    |    |    |    |    |    |   |  |  |  |  |  |  |   |   |   |   |   |   |   |   |   |   |   |   |   |   |   |   |   |   |   |   |    |    |    |    |    |    |    |    |    |    |    |    |    |    |    |    |    |    |    |    |    |    |    |    |    |    |    |    |  |
|--|---|---|-----------|---|---|---|--|---|---|---|---|---|---|---|---|---|---|---|---|---|---|---|---|----|----|----|----|----|----|----|----|----|----|----|----|----|----|----|----|----|----|----|----|----|----|----|----|----|---|--|--|--|--|--|--|---|---|---|---|---|---|---|---|---|---|---|---|---|---|---|---|---|---|---|---|----|----|----|----|----|----|----|----|----|----|----|----|----|----|----|----|----|----|----|----|----|----|----|----|----|----|----|----|--|
| <b>21</b>  | <b>22</b> Board of Education Meeting @ 6:00pm<br>(CRC - Board Room) | <b>23</b>   | <b>24</b> | <b>25</b>   | <b>26</b>   | <b>27</b>   |  |   |   |   |   |   |   |   |   |   |   |   |   |   |   |   |   |    |    |    |    |    |    |    |    |    |    |    |    |    |    |    |    |    |    |    |    |    |    |    |    |    |   |  |  |  |  |  |  |   |   |   |   |   |   |   |   |   |   |   |   |   |   |   |   |   |   |   |   |    |    |    |    |    |    |    |    |    |    |    |    |    |    |    |    |    |    |    |    |    |    |    |    |    |    |    |    |  |
| <b>28</b>  | <b>29</b>   | <b>30</b>   | <b>31</b> | <table border="1"> <tr> <td colspan="7"> <b>FEBRUARY</b><br/> <table border="1"> <tr><th>S</th><th>M</th><th>T</th><th>W</th><th>T</th><th>F</th><th>S</th></tr> <tr><td></td><td>1</td><td>2</td><td>3</td><td>4</td><td>5</td><td>6</td></tr> <tr><td>7</td><td>8</td><td>9</td><td>10</td><td>11</td><td>12</td><td>13</td></tr> <tr><td>14</td><td>15</td><td>16</td><td>17</td><td>18</td><td>19</td><td>20</td></tr> <tr><td>21</td><td>22</td><td>23</td><td>24</td><td>25</td><td>26</td><td>27</td></tr> <tr><td>28</td><td></td><td></td><td></td><td></td><td></td><td></td></tr> </table> </td> <td colspan="7"> <b>APRIL</b><br/> <table border="1"> <tr><th>S</th><th>M</th><th>T</th><th>W</th><th>T</th><th>F</th><th>S</th></tr> <tr><td></td><td></td><td></td><td></td><td>1</td><td>2</td><td>3</td></tr> <tr><td>4</td><td>5</td><td>6</td><td>7</td><td>8</td><td>9</td><td>10</td></tr> <tr><td>11</td><td>12</td><td>13</td><td>14</td><td>15</td><td>16</td><td>17</td></tr> <tr><td>18</td><td>19</td><td>20</td><td>21</td><td>22</td><td>23</td><td>24</td></tr> <tr><td>25</td><td>26</td><td>27</td><td>28</td><td>29</td><td>30</td><td></td></tr> </table> </td> </tr> </table> |   |   | <b>FEBRUARY</b><br><table border="1"> <tr><th>S</th><th>M</th><th>T</th><th>W</th><th>T</th><th>F</th><th>S</th></tr> <tr><td></td><td>1</td><td>2</td><td>3</td><td>4</td><td>5</td><td>6</td></tr> <tr><td>7</td><td>8</td><td>9</td><td>10</td><td>11</td><td>12</td><td>13</td></tr> <tr><td>14</td><td>15</td><td>16</td><td>17</td><td>18</td><td>19</td><td>20</td></tr> <tr><td>21</td><td>22</td><td>23</td><td>24</td><td>25</td><td>26</td><td>27</td></tr> <tr><td>28</td><td></td><td></td><td></td><td></td><td></td><td></td></tr> </table> |   |   |   |   |   |   | S | M | T | W | T | F | S |   | 1 | 2 | 3  | 4  | 5  | 6  | 7  | 8  | 9  | 10 | 11 | 12 | 13 | 14 | 15 | 16 | 17 | 18 | 19 | 20 | 21 | 22 | 23 | 24 | 25 | 26 | 27 | 28  |  |  |  |  |  |  | <b>APRIL</b><br><table border="1"> <tr><th>S</th><th>M</th><th>T</th><th>W</th><th>T</th><th>F</th><th>S</th></tr> <tr><td></td><td></td><td></td><td></td><td>1</td><td>2</td><td>3</td></tr> <tr><td>4</td><td>5</td><td>6</td><td>7</td><td>8</td><td>9</td><td>10</td></tr> <tr><td>11</td><td>12</td><td>13</td><td>14</td><td>15</td><td>16</td><td>17</td></tr> <tr><td>18</td><td>19</td><td>20</td><td>21</td><td>22</td><td>23</td><td>24</td></tr> <tr><td>25</td><td>26</td><td>27</td><td>28</td><td>29</td><td>30</td><td></td></tr> </table> |   |   |   |   |   |   | S | M | T | W | T | F | S |   |   |   |   | 1 | 2 | 3  | 4  | 5  | 6  | 7  | 8  | 9  | 10 | 11 | 12 | 13 | 14 | 15 | 16 | 17 | 18 | 19 | 20 | 21 | 22 | 23 | 24 | 25 | 26 | 27 | 28 | 29 | 30 |  |
| <b>FEBRUARY</b><br><table border="1"> <tr><th>S</th><th>M</th><th>T</th><th>W</th><th>T</th><th>F</th><th>S</th></tr> <tr><td></td><td>1</td><td>2</td><td>3</td><td>4</td><td>5</td><td>6</td></tr> <tr><td>7</td><td>8</td><td>9</td><td>10</td><td>11</td><td>12</td><td>13</td></tr> <tr><td>14</td><td>15</td><td>16</td><td>17</td><td>18</td><td>19</td><td>20</td></tr> <tr><td>21</td><td>22</td><td>23</td><td>24</td><td>25</td><td>26</td><td>27</td></tr> <tr><td>28</td><td></td><td></td><td></td><td></td><td></td><td></td></tr> </table> |   |   |           |   |   |   | S  | M | T | W | T | F | S |   | 1 | 2 | 3 | 4 | 5 | 6 | 7 | 8 | 9 | 10 | 11 | 12 | 13 | 14 | 15 | 16 | 17 | 18 | 19 | 20 | 21 | 22 | 23 | 24 | 25 | 26 | 27 | 28 |    |    |    |    |    |    | <b>APRIL</b><br><table border="1"> <tr><th>S</th><th>M</th><th>T</th><th>W</th><th>T</th><th>F</th><th>S</th></tr> <tr><td></td><td></td><td></td><td></td><td>1</td><td>2</td><td>3</td></tr> <tr><td>4</td><td>5</td><td>6</td><td>7</td><td>8</td><td>9</td><td>10</td></tr> <tr><td>11</td><td>12</td><td>13</td><td>14</td><td>15</td><td>16</td><td>17</td></tr> <tr><td>18</td><td>19</td><td>20</td><td>21</td><td>22</td><td>23</td><td>24</td></tr> <tr><td>25</td><td>26</td><td>27</td><td>28</td><td>29</td><td>30</td><td></td></tr> </table> |  |  |  |  |  |  | S   | M | T | W | T | F | S |   |   |   |   | 1 | 2 | 3 | 4 | 5 | 6 | 7 | 8 | 9 | 10 | 11 | 12 | 13 | 14 | 15 | 16 | 17 | 18 | 19 | 20 | 21 | 22 | 23 | 24 | 25 | 26 | 27 | 28 | 29 | 30 |    |    |    |    |    |    |    |  |
| S  | M   | T   | W         | T   | F   | S   |  |   |   |   |   |   |   |   |   |   |   |   |   |   |   |   |   |    |    |    |    |    |    |    |    |    |    |    |    |    |    |    |    |    |    |    |    |    |    |    |    |    |   |  |  |  |  |  |  |   |   |   |   |   |   |   |   |   |   |   |   |   |   |   |   |   |   |   |   |    |    |    |    |    |    |    |    |    |    |    |    |    |    |    |    |    |    |    |    |    |    |    |    |    |    |    |    |  |
|  | 1   | 2   | 3         | 4   | 5   | 6   |  |   |   |   |   |   |   |   |   |   |   |   |   |   |   |   |   |    |    |    |    |    |    |    |    |    |    |    |    |    |    |    |    |    |    |    |    |    |    |    |    |    |   |  |  |  |  |  |  |   |   |   |   |   |   |   |   |   |   |   |   |   |   |   |   |   |   |   |   |    |    |    |    |    |    |    |    |    |    |    |    |    |    |    |    |    |    |    |    |    |    |    |    |    |    |    |    |  |
| 7  | 8   | 9   | 10        | 11  | 12  | 13  |  |   |   |   |   |   |   |   |   |   |   |   |   |   |   |   |   |    |    |    |    |    |    |    |    |    |    |    |    |    |    |    |    |    |    |    |    |    |    |    |    |    |   |  |  |  |  |  |  |   |   |   |   |   |   |   |   |   |   |   |   |   |   |   |   |   |   |   |   |    |    |    |    |    |    |    |    |    |    |    |    |    |    |    |    |    |    |    |    |    |    |    |    |    |    |    |    |  |
| 14   | 15  | 16  | 17        | 18  | 19  | 20  |  |   |   |   |   |   |   |   |   |   |   |   |   |   |   |   |   |    |    |    |    |    |    |    |    |    |    |    |    |    |    |    |    |    |    |    |    |    |    |    |    |    |   |  |  |  |  |  |  |   |   |   |   |   |   |   |   |   |   |   |   |   |   |   |   |   |   |   |   |    |    |    |    |    |    |    |    |    |    |    |    |    |    |    |    |    |    |    |    |    |    |    |    |    |    |    |    |  |
| 21   | 22  | 23  | 24        | 25  | 26  | 27  |  |   |   |   |   |   |   |   |   |   |   |   |   |   |   |   |   |    |    |    |    |    |    |    |    |    |    |    |    |    |    |    |    |    |    |    |    |    |    |    |    |    |   |  |  |  |  |  |  |   |   |   |   |   |   |   |   |   |   |   |   |   |   |   |   |   |   |   |   |    |    |    |    |    |    |    |    |    |    |    |    |    |    |    |    |    |    |    |    |    |    |    |    |    |    |    |    |  |
| 28   |   |   |           |   |   |   |  |   |   |   |   |   |   |   |   |   |   |   |   |   |   |   |   |    |    |    |    |    |    |    |    |    |    |    |    |    |    |    |    |    |    |    |    |    |    |    |    |    |   |  |  |  |  |  |  |   |   |   |   |   |   |   |   |   |   |   |   |   |   |   |   |   |   |   |   |    |    |    |    |    |    |    |    |    |    |    |    |    |    |    |    |    |    |    |    |    |    |    |    |    |    |    |    |  |
| S  | M   | T   | W         | T   | F   | S   |  |   |   |   |   |   |   |   |   |   |   |   |   |   |   |   |   |    |    |    |    |    |    |    |    |    |    |    |    |    |    |    |    |    |    |    |    |    |    |    |    |    |   |  |  |  |  |  |  |   |   |   |   |   |   |   |   |   |   |   |   |   |   |   |   |   |   |   |   |    |    |    |    |    |    |    |    |    |    |    |    |    |    |    |    |    |    |    |    |    |    |    |    |    |    |    |    |  |
|  |   |   |           | 1   | 2   | 3   |  |   |   |   |   |   |   |   |   |   |   |   |   |   |   |   |   |    |    |    |    |    |    |    |    |    |    |    |    |    |    |    |    |    |    |    |    |    |    |    |    |    |   |  |  |  |  |  |  |   |   |   |   |   |   |   |   |   |   |   |   |   |   |   |   |   |   |   |   |    |    |    |    |    |    |    |    |    |    |    |    |    |    |    |    |    |    |    |    |    |    |    |    |    |    |    |    |  |
| 4  | 5   | 6   | 7         | 8   | 9   | 10  |  |   |   |   |   |   |   |   |   |   |   |   |   |   |   |   |   |    |    |    |    |    |    |    |    |    |    |    |    |    |    |    |    |    |    |    |    |    |    |    |    |    |   |  |  |  |  |  |  |   |   |   |   |   |   |   |   |   |   |   |   |   |   |   |   |   |   |   |   |    |    |    |    |    |    |    |    |    |    |    |    |    |    |    |    |    |    |    |    |    |    |    |    |    |    |    |    |  |
| 11   | 12  | 13  | 14        | 15  | 16  | 17  |  |   |   |   |   |   |   |   |   |   |   |   |   |   |   |   |   |    |    |    |    |    |    |    |    |    |    |    |    |    |    |    |    |    |    |    |    |    |    |    |    |    |   |  |  |  |  |  |  |   |   |   |   |   |   |   |   |   |   |   |   |   |   |   |   |   |   |   |   |    |    |    |    |    |    |    |    |    |    |    |    |    |    |    |    |    |    |    |    |    |    |    |    |    |    |    |    |  |
| 18   | 19  | 20  | 21        | 22  | 23  | 24  |  |   |   |   |   |   |   |   |   |   |   |   |   |   |   |   |   |    |    |    |    |    |    |    |    |    |    |    |    |    |    |    |    |    |    |    |    |    |    |    |    |    |   |  |  |  |  |  |  |   |   |   |   |   |   |   |   |   |   |   |   |   |   |   |   |   |   |   |   |    |    |    |    |    |    |    |    |    |    |    |    |    |    |    |    |    |    |    |    |    |    |    |    |    |    |    |    |  |
| 25   | 26  | 27  | 28        | 29  | 30  |   |  |   |   |   |   |   |   |   |   |   |   |   |   |   |   |   |   |    |    |    |    |    |    |    |    |    |    |    |    |    |    |    |    |    |    |    |    |    |    |    |    |    |   |  |  |  |  |  |  |   |   |   |   |   |   |   |   |   |   |   |   |   |   |   |   |   |   |   |   |    |    |    |    |    |    |    |    |    |    |    |    |    |    |    |    |    |    |    |    |    |    |    |    |    |    |    |    |  |

**Spring Recess - No Student/Teacher Attendance**

***Music in Our Schools Month***

Notes:

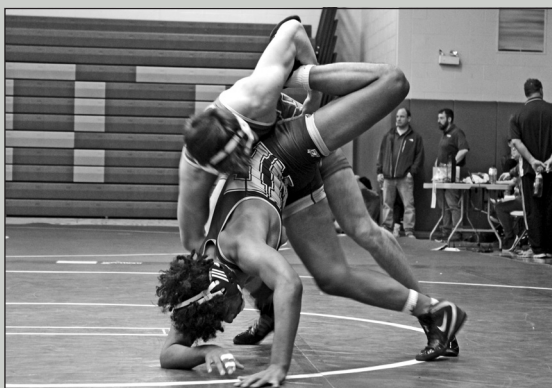
---



---



---



# APRIL 2021

Sunday

Monday

Tuesday

Wednesday

Thursday

Friday

Saturday

**MARCH**

| S  | M  | T  | W  | T  | F  | S  |
|----|----|----|----|----|----|----|
|    | 1  | 2  | 3  | 4  | 5  | 6  |
| 7  | 8  | 9  | 10 | 11 | 12 | 13 |
| 14 | 15 | 16 | 17 | 18 | 19 | 20 |
| 21 | 22 | 23 | 24 | 25 | 26 | 27 |
| 28 | 29 | 30 | 31 |    |    |    |

**MAY**

| S  | M  | T  | W  | T  | F  | S  |
|----|----|----|----|----|----|----|
|    |    |    |    |    |    | 1  |
| 2  | 3  | 4  | 5  | 6  | 7  | 8  |
| 9  | 10 | 11 | 12 | 13 | 14 | 15 |
| 16 | 17 | 18 | 19 | 20 | 21 | 22 |
| 23 | 24 | 25 | 26 | 27 | 28 | 29 |
| 30 | 31 |    |    |    |    |    |

|   |                                     |           |
|---|-------------------------------------|-----------|
| <b>1</b>                                      | <b>2</b>                            | <b>3</b>  |
| Spring Recess - No Student/Teacher Attendance |                                     |           |
|   | Good Friday                         |           |
| <b>4</b>                                      | <b>5</b>                            | <b>6</b>  |
| <b>7</b>                                      | <b>8</b>                            | <b>9</b>  |
|   | HS - Deadline for SAT<br>on May 8th | <b>10</b> |
| Spring Recess - No Student/Teacher Attendance |                                     |           |
| Easter  |                                     |           |

|           |   |   |           |           |  |           |
|-----------|---|---|-----------|-----------|--|-----------|
| <b>11</b> | <b>12</b> Work Session @ 6:00pm<br>(CRC - Board Room)                           | <b>13</b>   | <b>14</b> | <b>15</b> | <b>16</b>  | <b>17</b> |
| <b>18</b> | <b>19</b> Pre-K Applications Due<br>to the PEC Office by 4:00pm<br>(PEC Office) | <b>20</b> Early Release Day<br>Elementary: 8:45am-2:25pm,<br>Secondary: 7:44am-1:14pm | <b>21</b> | <b>22</b> | <b>23</b> MS/HS - End of Third<br>Marking Period | <b>24</b> |
|           |   | <b>IEC/MS - NYS Grades 3-8 ELA Assessment</b>   |           |           |  |           |
|           |   | <b>Earth Day</b>  |           |           |  |           |
| <b>25</b> | <b>26</b> Board of Education<br>Meeting @ 6:00pm<br>(CRC - Board Room)          | <b>27</b>   | <b>28</b> | <b>29</b> | <b>30</b>  |           |

*Happy Spring!*

Notes:

---



---



---



# MAY 2021

Sunday

Monday

Tuesday

Wednesday

Thursday

Friday

Saturday

**APRIL**

| S  | M  | T  | W  | T  | F  | S  |
|----|----|----|----|----|----|----|
|    |    |    |    | 1  | 2  | 3  |
| 4  | 5  | 6  | 7  | 8  | 9  | 10 |
| 11 | 12 | 13 | 14 | 15 | 16 | 17 |
| 18 | 19 | 20 | 21 | 22 | 23 | 24 |
| 25 | 26 | 27 | 28 | 29 | 30 |    |

**JUNE**

| S  | M  | T  | W  | T  | F  | S  |
|----|----|----|----|----|----|----|
|    |    | 1  | 2  | 3  | 4  | 5  |
| 6  | 7  | 8  | 9  | 10 | 11 | 12 |
| 13 | 14 | 15 | 16 | 17 | 18 | 19 |
| 20 | 21 | 22 | 23 | 24 | 25 | 26 |
| 27 | 28 | 29 | 30 |    |    |    |

1

2

3

4

5

6

7

HS - Deadline for ACT on June 12th

8

HS - SAT Test @ 7:45am

IEC/MS - NYS Grades 3-8 Math Assessment

HS - Advanced Placement Exams

|                                      |   |  |   |           |   |           |
|--------------------------------------|---|--|---|-----------|---|-----------|
| <b>9</b>                             | <b>10</b> Annual Budget Hearing/<br>Meet the Candidates Night<br>@ 6:00pm<br>(CRC - Board Room)<br><br>Work Sessions @ 6:00pm<br>(CRC - Board Room) | <b>11</b>  | <b>12</b>   | <b>13</b> | <b>14</b>                                   | <b>15</b> |
| <b>HS - Advanced Placement Exams</b> |   |  |   |           |   |           |
| <b>16</b>                            | <b>17</b>   | <b>18</b> Budget Vote and Election<br>@ 7:00am-8:00pm<br>(CRC - Multi-Purpose Room)<br>Early Release Day<br>Elementary: 8:45am-2:25pm,<br>Secondary: 7:44am-1:14pm | <b>19</b>   | <b>20</b> | <b>21</b> MS/HS - 35 Week<br>Marking Period | <b>22</b> |
| <b>23</b>                            | <b>24</b> Board of Education<br>Meeting @ 6:00pm<br>(CRC - Board Room)  | <b>25</b>  | <b>26</b>   | <b>27</b> | <b>28</b>                                   | <b>29</b> |
| <b>30</b>                            | <b>Memorial Day<br/>District Closed</b>   | <b>31</b>  | <b>Memorial Day Optional<br/>Recess (if no emergency<br/>closing prior to 4/30<br/>- No Student/Teacher<br/>Attendance)</b> |           |   |           |

***Don't Forget to Vote!***

Notes:

---



---



---





# JUNE 2021

| Sunday   | Monday  | Tuesday         | Wednesday       | Thursday         | Friday           | Saturday                                       |  |   |   |   |   |   |   |   |  |  |  |  |  |  |   |   |   |   |   |   |   |   |   |    |    |    |    |    |    |    |    |    |    |    |    |    |    |    |    |    |    |    |    |    |    |  |  |  |  |  |  |  |                 |                 |                 |                 |
|--|---|-----------------|-----------------|------------------|------------------|--|--|---|---|---|---|---|---|---|--|--|--|--|--|--|---|---|---|---|---|---|---|---|---|----|----|----|----|----|----|----|----|----|----|----|----|----|----|----|----|----|----|----|----|----|----|--|--|--|--|--|--|--|-----------------|-----------------|-----------------|-----------------|
| <table border="1"> <tr><td colspan="7">MAY</td></tr> <tr><td>S</td><td>M</td><td>T</td><td>W</td><td>T</td><td>F</td><td>S</td></tr> <tr><td></td><td></td><td></td><td></td><td></td><td></td><td>1</td></tr> <tr><td>2</td><td>3</td><td>4</td><td>5</td><td>6</td><td>7</td><td>8</td></tr> <tr><td>9</td><td>10</td><td>11</td><td>12</td><td>13</td><td>14</td><td>15</td></tr> <tr><td>16</td><td>17</td><td>18</td><td>19</td><td>20</td><td>21</td><td>22</td></tr> <tr><td>23</td><td>24</td><td>25</td><td>26</td><td>27</td><td>28</td><td>29</td></tr> <tr><td>30</td><td>31</td><td></td><td></td><td></td><td></td><td></td></tr> </table> | MAY   |                 |                 |                  |                  |  |  | S | M | T | W | T | F | S |  |  |  |  |  |  | 1 | 2 | 3 | 4 | 5 | 6 | 7 | 8 | 9 | 10 | 11 | 12 | 13 | 14 | 15 | 16 | 17 | 18 | 19 | 20 | 21 | 22 | 23 | 24 | 25 | 26 | 27 | 28 | 29 | 30 | 31 |  |  |  |  |  |  | <p><b>1</b></p> <p>HS - US History and Government Regents Exam</p> <p>NYS Grade 8 Science Performance Test</p> | <p><b>2</b></p> | <p><b>3</b></p> | <p><b>4</b></p> | <p><b>5</b></p> |
| MAY  |   |                 |                 |                  |                  |  |  |   |   |   |   |   |   |   |  |  |  |  |  |  |   |   |   |   |   |   |   |   |   |    |    |    |    |    |    |    |    |    |    |    |    |    |    |    |    |    |    |    |    |    |    |  |  |  |  |  |  |  |                 |                 |                 |                 |
| S  | M   | T               | W               | T                | F                | S  |  |   |   |   |   |   |   |   |  |  |  |  |  |  |   |   |   |   |   |   |   |   |   |    |    |    |    |    |    |    |    |    |    |    |    |    |    |    |    |    |    |    |    |    |    |  |  |  |  |  |  |  |                 |                 |                 |                 |
|  |   |                 |                 |                  |                  | 1  |  |   |   |   |   |   |   |   |  |  |  |  |  |  |   |   |   |   |   |   |   |   |   |    |    |    |    |    |    |    |    |    |    |    |    |    |    |    |    |    |    |    |    |    |    |  |  |  |  |  |  |  |                 |                 |                 |                 |
| 2  | 3   | 4               | 5               | 6                | 7                | 8  |  |   |   |   |   |   |   |   |  |  |  |  |  |  |   |   |   |   |   |   |   |   |   |    |    |    |    |    |    |    |    |    |    |    |    |    |    |    |    |    |    |    |    |    |    |  |  |  |  |  |  |  |                 |                 |                 |                 |
| 9  | 10  | 11              | 12              | 13               | 14               | 15   |  |   |   |   |   |   |   |   |  |  |  |  |  |  |   |   |   |   |   |   |   |   |   |    |    |    |    |    |    |    |    |    |    |    |    |    |    |    |    |    |    |    |    |    |    |  |  |  |  |  |  |  |                 |                 |                 |                 |
| 16   | 17  | 18              | 19              | 20               | 21               | 22   |  |   |   |   |   |   |   |   |  |  |  |  |  |  |   |   |   |   |   |   |   |   |   |    |    |    |    |    |    |    |    |    |    |    |    |    |    |    |    |    |    |    |    |    |    |  |  |  |  |  |  |  |                 |                 |                 |                 |
| 23   | 24  | 25              | 26              | 27               | 28               | 29   |  |   |   |   |   |   |   |   |  |  |  |  |  |  |   |   |   |   |   |   |   |   |   |    |    |    |    |    |    |    |    |    |    |    |    |    |    |    |    |    |    |    |    |    |    |  |  |  |  |  |  |  |                 |                 |                 |                 |
| 30   | 31  |                 |                 |                  |                  |  |  |   |   |   |   |   |   |   |  |  |  |  |  |  |   |   |   |   |   |   |   |   |   |    |    |    |    |    |    |    |    |    |    |    |    |    |    |    |    |    |    |    |    |    |    |  |  |  |  |  |  |  |                 |                 |                 |                 |
| <p><b>6</b></p>  | <p><b>7</b></p> <p>NYS Grades 4 &amp; 8 Science Assessments Written Portion</p> | <p><b>8</b></p> | <p><b>9</b></p> | <p><b>10</b></p> | <p><b>11</b></p> | <p><b>12</b></p> <p>HS - ACT Test @ 7:45am</p> |  |   |   |   |   |   |   |   |  |  |  |  |  |  |   |   |   |   |   |   |   |   |   |    |    |    |    |    |    |    |    |    |    |    |    |    |    |    |    |    |    |    |    |    |    |  |  |  |  |  |  |  |                 |                 |                 |                 |

| <b>13</b> | <b>14</b> Work Sessions @ 6:00pm<br>(CRC - Board Room)  | <b>15</b> Early Release Day<br>Elementary: 8:45am-2:25pm,<br>Secondary: 7:44am-1:14pm | <b>16</b>            | <b>17</b>   | <b>18</b>                                      | <b>19</b> |      |  |  |  |  |  |  |   |   |   |   |   |   |   |  |  |  |  |   |   |   |   |   |   |   |   |   |    |    |    |    |    |    |    |    |    |    |    |    |    |    |    |    |    |    |    |    |    |    |
|-----------|---|---|----------------------|---|--|-----------|------|--|--|--|--|--|--|---|---|---|---|---|---|---|--|--|--|--|---|---|---|---|---|---|---|---|---|----|----|----|----|----|----|----|----|----|----|----|----|----|----|----|----|----|----|----|----|----|----|
|           |   |   | <b>Regents Exams</b> |   |  |           |      |  |  |  |  |  |  |   |   |   |   |   |   |   |  |  |  |  |   |   |   |   |   |   |   |   |   |    |    |    |    |    |    |    |    |    |    |    |    |    |    |    |    |    |    |    |    |    |    |
| <b>20</b> | <b>21</b> Board of Education Meeting @ 6:00pm<br>(CRC - Board Room)<br><br><b>First Day of Summer</b> | <b>22</b>   | <b>23</b>            | <b>24</b>   | <b>25</b> MS/HS - End of Fourth Marking Period | <b>26</b> |      |  |  |  |  |  |  |   |   |   |   |   |   |   |  |  |  |  |   |   |   |   |   |   |   |   |   |    |    |    |    |    |    |    |    |    |    |    |    |    |    |    |    |    |    |    |    |    |    |
|           |   |   | <b>Regents Exams</b> |   |  |           |      |  |  |  |  |  |  |   |   |   |   |   |   |   |  |  |  |  |   |   |   |   |   |   |   |   |   |    |    |    |    |    |    |    |    |    |    |    |    |    |    |    |    |    |    |    |    |    |    |
| <b>27</b> | <b>28</b>   | <b>29</b>   | <b>30</b>            | <table border="1" style="width: 100%; text-align: center;"> <thead> <tr> <th colspan="7">JULY</th> </tr> <tr> <th>S</th> <th>M</th> <th>T</th> <th>W</th> <th>T</th> <th>F</th> <th>S</th> </tr> </thead> <tbody> <tr> <td></td> <td></td> <td></td> <td></td> <td>1</td> <td>2</td> <td>3</td> </tr> <tr> <td>4</td> <td>5</td> <td>6</td> <td>7</td> <td>8</td> <td>9</td> <td>10</td> </tr> <tr> <td>11</td> <td>12</td> <td>13</td> <td>14</td> <td>15</td> <td>16</td> <td>17</td> </tr> <tr> <td>18</td> <td>19</td> <td>20</td> <td>21</td> <td>22</td> <td>23</td> <td>24</td> </tr> <tr> <td>25</td> <td>26</td> <td>27</td> <td>28</td> <td>29</td> <td>30</td> <td>31</td> </tr> </tbody> </table> |  |           | JULY |  |  |  |  |  |  | S | M | T | W | T | F | S |  |  |  |  | 1 | 2 | 3 | 4 | 5 | 6 | 7 | 8 | 9 | 10 | 11 | 12 | 13 | 14 | 15 | 16 | 17 | 18 | 19 | 20 | 21 | 22 | 23 | 24 | 25 | 26 | 27 | 28 | 29 | 30 | 31 |
| JULY      |   |   |                      |   |  |           |      |  |  |  |  |  |  |   |   |   |   |   |   |   |  |  |  |  |   |   |   |   |   |   |   |   |   |    |    |    |    |    |    |    |    |    |    |    |    |    |    |    |    |    |    |    |    |    |    |
| S         | M   | T   | W                    | T   | F  | S         |      |  |  |  |  |  |  |   |   |   |   |   |   |   |  |  |  |  |   |   |   |   |   |   |   |   |   |    |    |    |    |    |    |    |    |    |    |    |    |    |    |    |    |    |    |    |    |    |    |
|           |   |   |                      | 1   | 2  | 3         |      |  |  |  |  |  |  |   |   |   |   |   |   |   |  |  |  |  |   |   |   |   |   |   |   |   |   |    |    |    |    |    |    |    |    |    |    |    |    |    |    |    |    |    |    |    |    |    |    |
| 4         | 5   | 6   | 7                    | 8   | 9  | 10        |      |  |  |  |  |  |  |   |   |   |   |   |   |   |  |  |  |  |   |   |   |   |   |   |   |   |   |    |    |    |    |    |    |    |    |    |    |    |    |    |    |    |    |    |    |    |    |    |    |
| 11        | 12  | 13  | 14                   | 15  | 16   | 17        |      |  |  |  |  |  |  |   |   |   |   |   |   |   |  |  |  |  |   |   |   |   |   |   |   |   |   |    |    |    |    |    |    |    |    |    |    |    |    |    |    |    |    |    |    |    |    |    |    |
| 18        | 19  | 20  | 21                   | 22  | 23   | 24        |      |  |  |  |  |  |  |   |   |   |   |   |   |   |  |  |  |  |   |   |   |   |   |   |   |   |   |    |    |    |    |    |    |    |    |    |    |    |    |    |    |    |    |    |    |    |    |    |    |
| 25        | 26  | 27  | 28                   | 29  | 30   | 31        |      |  |  |  |  |  |  |   |   |   |   |   |   |   |  |  |  |  |   |   |   |   |   |   |   |   |   |    |    |    |    |    |    |    |    |    |    |    |    |    |    |    |    |    |    |    |    |    |    |

***Congratulations,  
Class of 2021!***

Notes:

---



---



---

# JULY 2021

Sunday

Monday

Tuesday

Wednesday

Thursday

Friday

Saturday

JUNE

| S  | M  | T  | W  | T  | F  | S  |
|----|----|----|----|----|----|----|
|    |    | 1  | 2  | 3  | 4  | 5  |
| 6  | 7  | 8  | 9  | 10 | 11 | 12 |
| 13 | 14 | 15 | 16 | 17 | 18 | 19 |
| 20 | 21 | 22 | 23 | 24 | 25 | 26 |
| 27 | 28 | 29 | 30 |    |    |    |

AUGUST

| S  | M  | T  | W  | T  | F  | S  |
|----|----|----|----|----|----|----|
| 1  | 2  | 3  | 4  | 5  | 6  | 7  |
| 8  | 9  | 10 | 11 | 12 | 13 | 14 |
| 15 | 16 | 17 | 18 | 19 | 20 | 21 |
| 22 | 23 | 24 | 25 | 26 | 27 | 28 |
| 29 | 30 | 31 |    |    |    |    |



1

2

3

4

5

6

7

8

9

10

Independence Day

11

12

13

14

15

16

17

18

19

20

21

22

23

24

25

26

27

28

29

30

31

# Lewiston-Porter Board of Education 2020-2021



President  
Jodee Riordan - 745-9639  
Term: 2019-2022



Vice President  
Danielle Mullen -523-9507  
Term: 2020-2023



Gemma Fournier - 745-9644  
Term: 2018-2021



Charlotte L. Huebschmann - 745-9536  
Term: 2020-2023



Jennifer Klemick -228-9696  
Term: 2020-2021



Anne H. Orr - 404-5111  
Term: 2019-2022



Betty VanDenBosch-Warrick -579-2026  
Term: 2019-2022

## The 2020-2021 Regular Meeting Schedule

All meetings are scheduled to be held at 6:00 p.m. in the Community Resource Center, Board Room.

**Board Retreat:** July 15, 16, 2020

**Work Session Meetings:**

|                                 |   |
|---------------------------------|---|
| July 15, 2020                   | January 11, 2021                          |
| August 10, 2020                 | February 08, 2021                         |
| September 14, 2020              | March 08, 2021                            |
| October 5, 2020                 | April 12, 2021                            |
| (1st Monday due to the holiday) | May 10, 2021                              |
| November 9, 2020                | (Budget Hearing/Meet the Candidate Night) |
| December 14, 2020               | June 14, 2021                             |

**Regular Board Meetings:**

|                                      |   |
|--------------------------------------|---|
| July 27, 2020                        | February 22, 2021   |
| August 24, 2020                      | March 22, 2021  |
| September 28, 2020                   | April 26, 2021  |
| October 26, 2020                     | May 24, 2021  |
| November 23, 2020                    | June 21, 2021   |
| December 21, 2020                    | (3rd Monday due to the end of the school year)                    |
| (3rd Monday due to the Winter Break) | <b>Annual District Meeting, Election &amp; Vote:</b> May 18, 2021 |
| January 25, 2021                     |   |

Board Work Session meetings will be held on the second Monday of each month. Regular Board of Education meetings are held on the fourth Monday of each month. All meetings are open to the public, and a cordial invitation is extended to all interested citizens. The public has the opportunity to address the Board members at the beginning of each regular board of education meeting. Please check the website [www.lew-port.com](http://www.lew-port.com) for updates.



Lewiston-Porter Central School District  
4061 Creek Road  
Youngstown, NY 14174

U. S. Postage  
PAID  
Non-Profit  
Organization  
Permit No. 25  
Lewiston, NY 14092

## Postal Customer

